

RG | CONTRACT FURNITURE & ARCHITECTURAL PRODUCTS
2023 PRESENTATION

ALLUR

| R | G | RUDER
GROUP

WHY ALUR

Demountable

ALUR Glass Walls are a furniture system

Turnkey Pricing

Pricing includes delivery, installation and project management

Minimalist Design

Minimal framing and square design is simple and elegant

Optimal Sound Privacy

ALUR Glass Wall come standard with four-sided door seals

Exceptional Customer Service

Quick response rates, design assistance, short lead times and in-house installation experts

Tax Depreciation

Demountable walls are classified as furniture by the IRS and may qualify for 100% first year depreciation

Scratch & Fingerprint Resistant Framing

ALUR Glass Wall comes standard in a scratch resistant bead-blasted clear anodized aluminum finish that will not show fingerprints and is lighter in color for a more modern look

Qualify for LEED Points

ALUR Walls can contribute up to 17 LEED® points

Superior Quality

ALUR Walls are a manufactured system ensuring consistent fit and finish

Frameless Glass Doors

ALUR Glass Wall comes standard with full height frameless & postless glass doors

Clear Polycarbonate Joints

ALUR Glass Wall crystalline polycarbonate joint is 93% clear and will not discolor or shrink

Multiple Finish Options

ALUR offers clear anodized aluminum, polished aluminum, white, black, bronze and metallic PVDF resin frame options

Design Innovation

ALUR Glass Wall tongue-and-groove joint design provides a smooth glass-to-glass connection, minimizes deflection, and allows film to be applied directly over joint

Tour Our Chicago Showroom

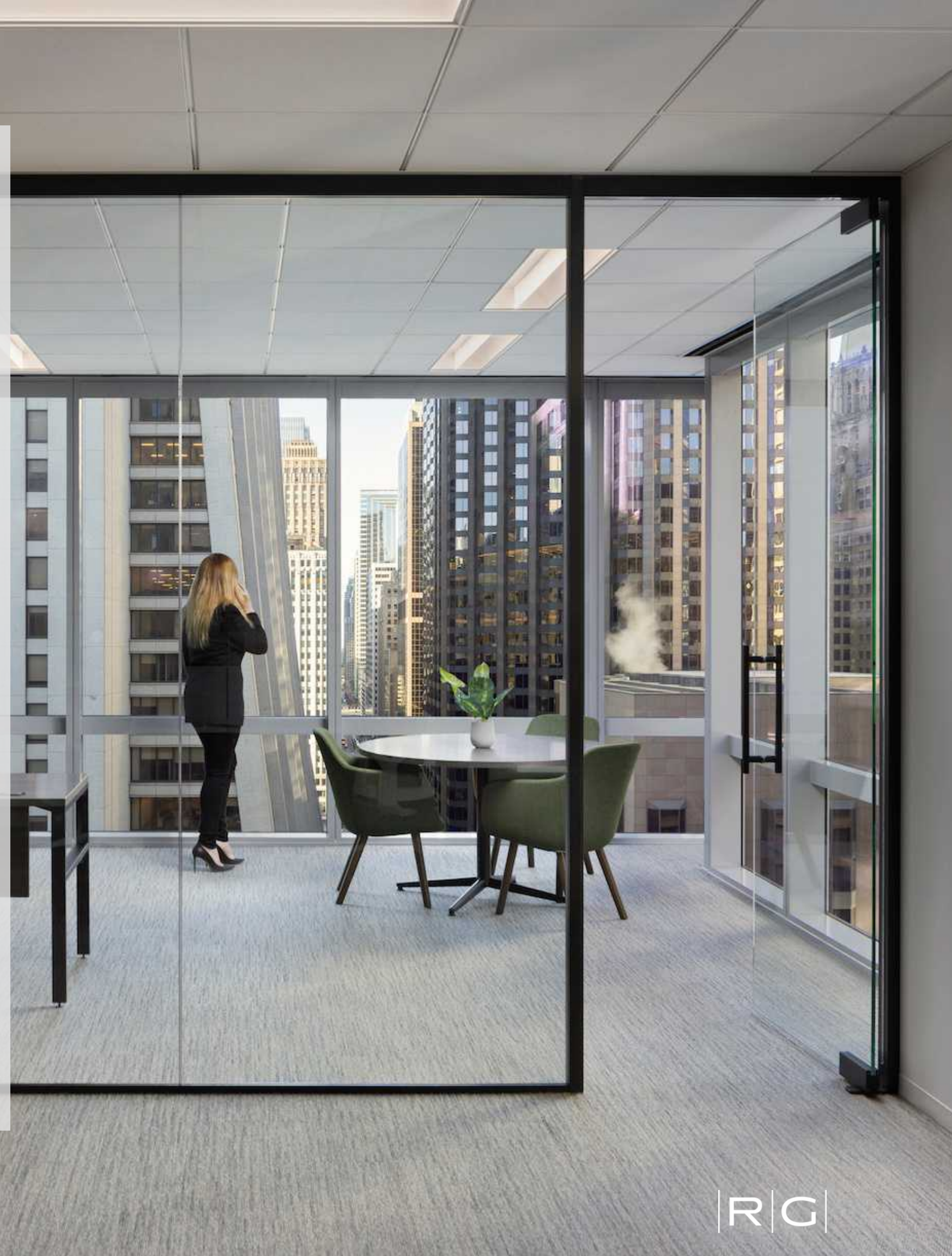
Take a 3D tour

ALUR

ALUR

Single Glazed System

The ALUR Glass Wall discreet glass-to-glass joints eliminate the need for vertical mullions, creating the stunning impression of a vast expanse of unsupported glass. Low-profile channels with minimal framing also create a much more streamlined appearance compared to other bulkier, heavy-framed storefront systems. The aluminum is bead-blasted prior to anodizing, providing a flawless finish that is also fingerprint and scratch resistant. PVDF resin finishes are available in black, dark bronze, and white as well as matching custom-color finishes. Glass options include clear and low-iron tempered and laminated, gray and bronze tinted, acid etched, and white laminated.



26-29
NIC

36-39
STC


ALUR Single Glazed System


Rating is based on door and glass types.





PRODUCT FEATURES


Remarkably
Refined.


- 

Seismic Approved
- 

1/2" Thick Glass
- 

Up to 10' High
- 

Scratch-Resistant Finish
- 

Frameless Glass System
- 

Structural Polycarbonate Joints





A PERFECT FIT. EVERYTIME.

ALUR Glass Wall dry joints are fabricated from high quality polycarbonate resin that is 93% clear and will not shrink or fade when exposed to UV. The unique tongue and groove design provides a secure glass-to-glass connection and self corrects the natural tendency of glass to bow, especially in larger pieces for a perfect fit every time. The connection forms a perfect seal preventing any sound leakage through the glass.



Glass door with post.

Vertical frame or 'post' between door
and fixed glass panels.



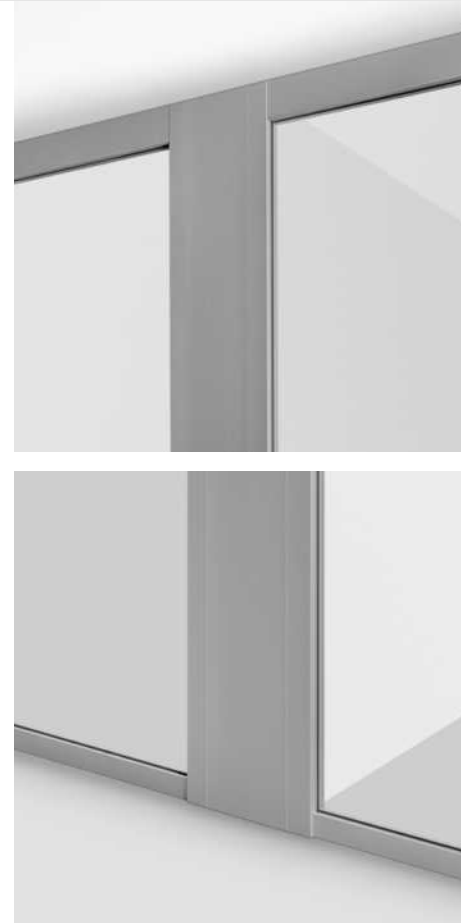
Glass door without post.

Postless, no vertical frame or 'post'
between door and fixed glass panels.

Drywall integration.

Drywall covers provide a flush connection between glass and drywall dividing wall.

The transit post provides a glass-to-glass connection in front of a drywall dividing wall.

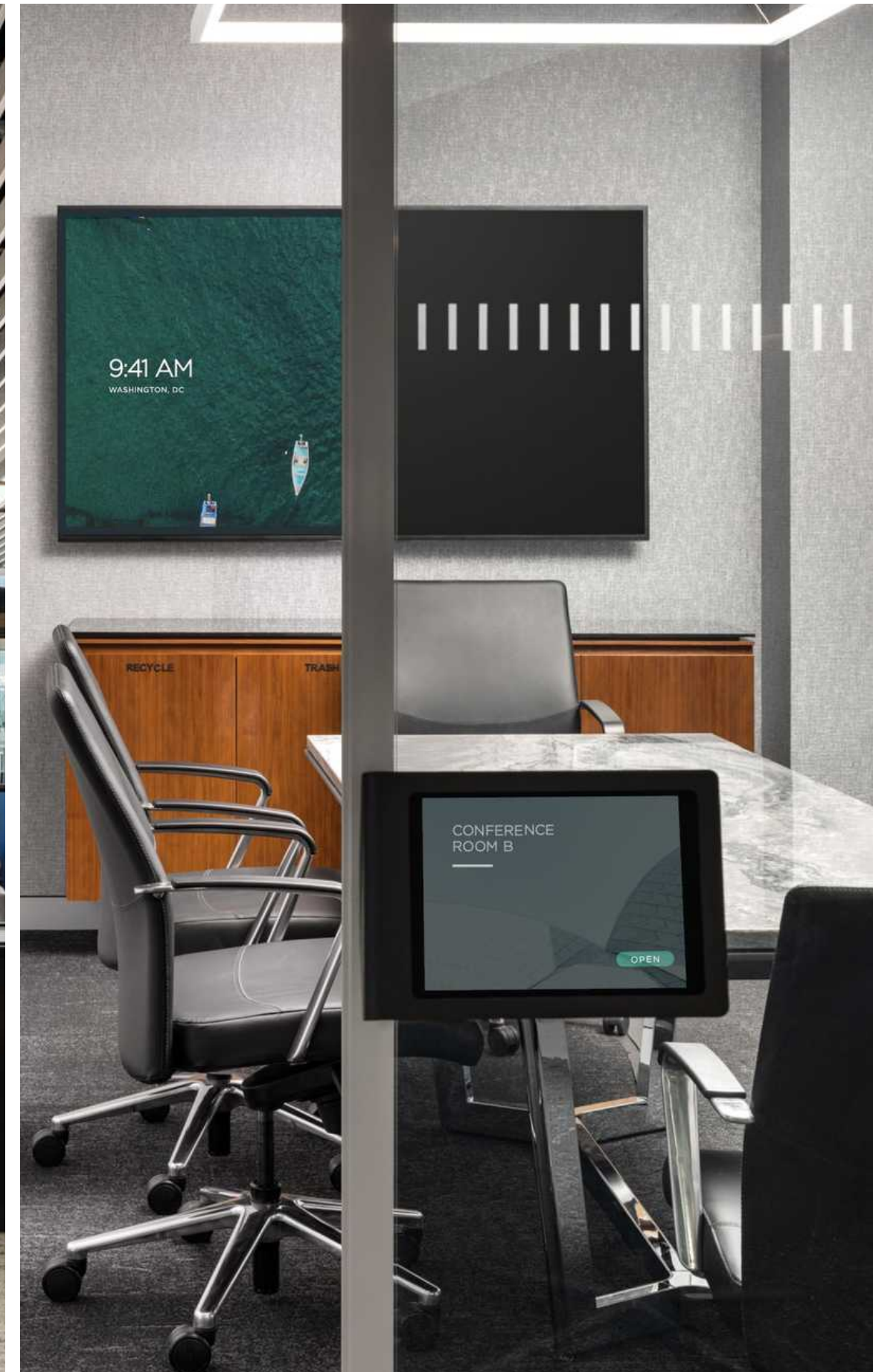
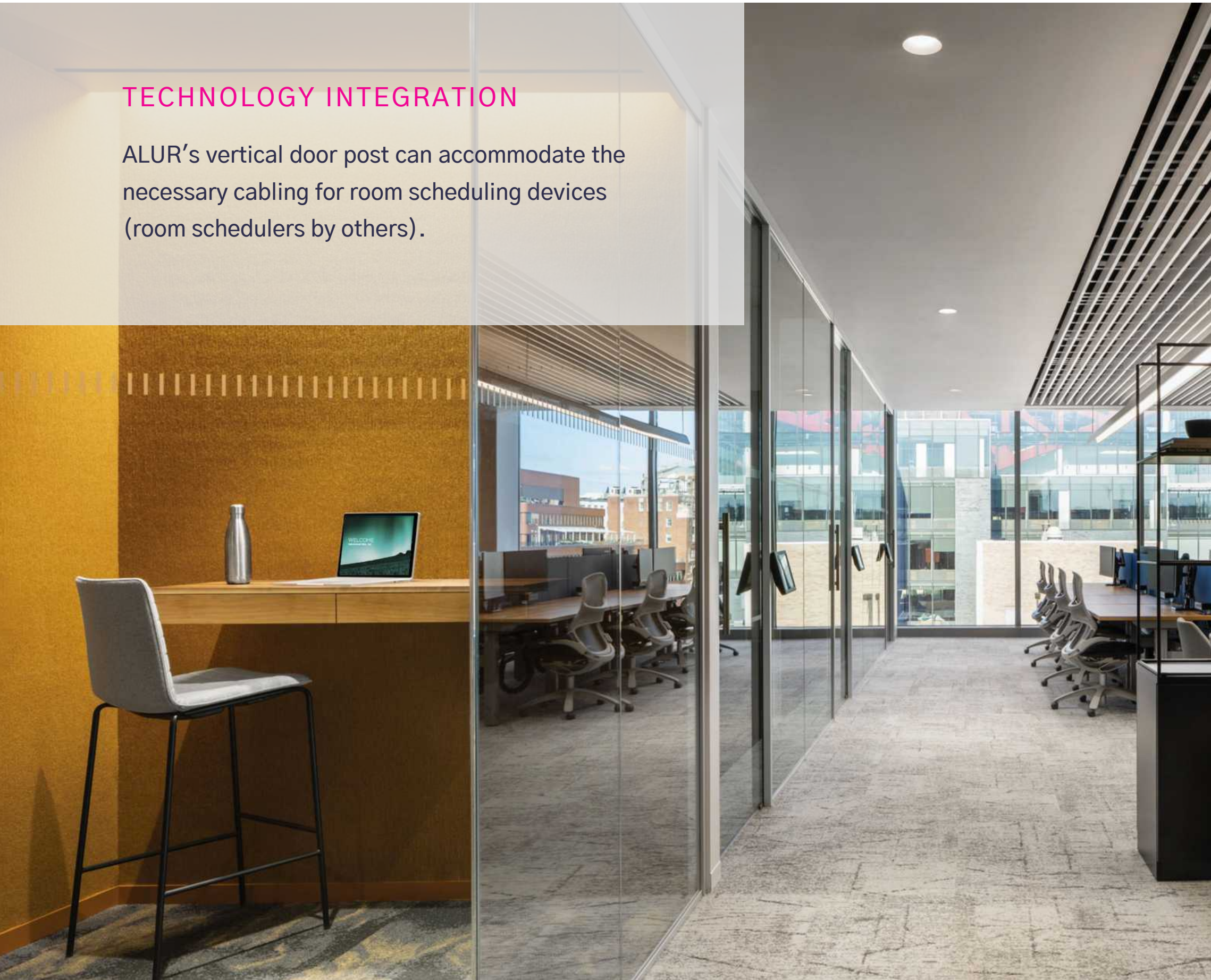


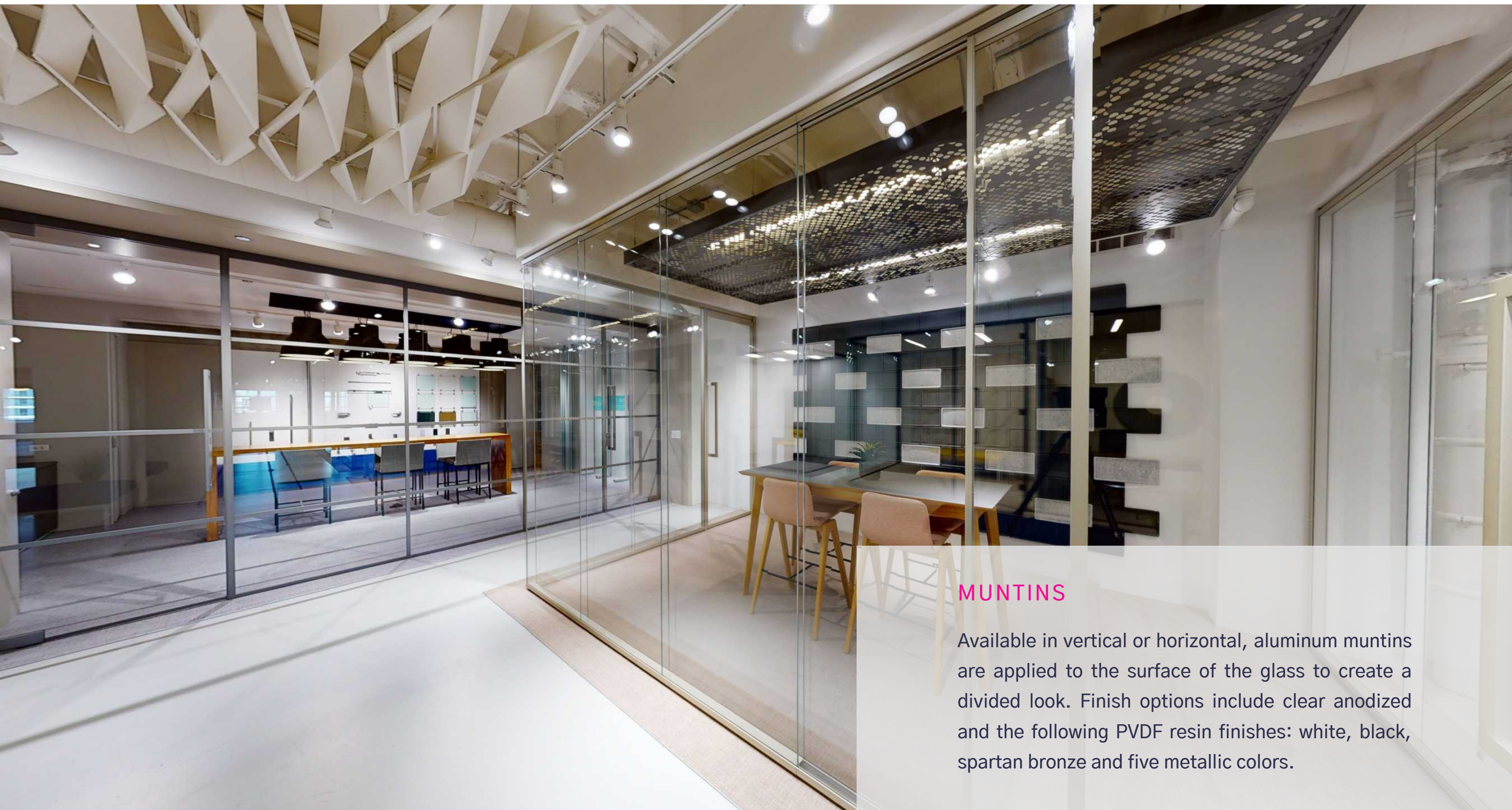
Standard Hardware Options



TECHNOLOGY INTEGRATION

ALUR's vertical door post can accommodate the necessary cabling for room scheduling devices (room schedulers by others).





MUNTINS

Available in vertical or horizontal, aluminum muntins are applied to the surface of the glass to create a divided look. Finish options include clear anodized and the following PVDF resin finishes: white, black, spartan bronze and five metallic colors.

Curved Corners | Available on ALUR Single Glazed in radius 14"-36"



Framing to support any design.

Minimally designed, precision extruded aluminum profiles provide exceptional support and durability, while accentuating the natural beauty of glass.

Bead-blasted aluminum finish provides a softer look and is scratch and fingerprint resistant.

More durable than powder coatings, PVDF resin-based coating is both functional and decorative. It won't chalk, pit, chip, age or lose its color and sheen.

Available in 9 finishes, including 5 premium metallic finishes.



CLEAR ANODIZED



BONE WHITE



SPARTAN BRONZE



BLACK



METALLIC CHAMPAGNE GOLD



METALLIC MEDIUM BRONZE



METALLIC POLISHED GREY SILVER



METALLIC MEDIUM SILVER



METALLIC METRO BRONZE

Sustainable design and thoughtful choice sourcing of materials.

Locally Sourced & Low-Emitting Materials.

All of ALUR glass is sourced directly from local suppliers to keep costs low and reduce our carbon footprint. Our clear anodized aluminum finish is a water-based process and uses no VOCs. Our PVDF coatings are resin-based and have very low VOCs.

5 Glass Solutions: Clear Tempered, Low Iron (Ultra Clear), Laminated, Laminated with Acoustic Interlayer, Polar White Laminated and Acid Etched.

Alur Features & Benefits

SYSTEM SPECIFICATIONS

- Standard 1/2" tempered glass provides a 36 STC (Sound Transmission Class)
- Postless option eliminates vertical posts for an exceptionally light scale look
- Polycarbonate joints are 93% clear and will not discolor or fade over time
- Multiple frame finishes: Bead-blasted aluminum; Black, White and Bronze PVDF resin; Polished aluminum

SYSTEM CONSTRUCTION

- Tongue and groove joint design provides smooth glass to glass connection, optimal sound seal and minimal deflection
- Meets IBC 2015 deflection standard for glass walls up to 10' high by 4' wide
- I, L, T, Y & flexible multi-angle joints facilitate a wide variety of configurations
- On-site framing provides superior fit and finish
- Seismic approved for use in CA

STANDARD HARDWARE

- ADA complaint hardware options: Single action lever set; Top locking ladder pull; both with 7-pin SFIC
- Sliding doors are concealed on the back side of doorframe with no exposed hardware for a streamlined look

ACOUSTICS & SOUND RATINGS

- Sound seals come standard in all framing, eliminating flanking (sound transference) paths
- All doors fitted with compression seals to minimize sound loss

SUSTAINABILITY

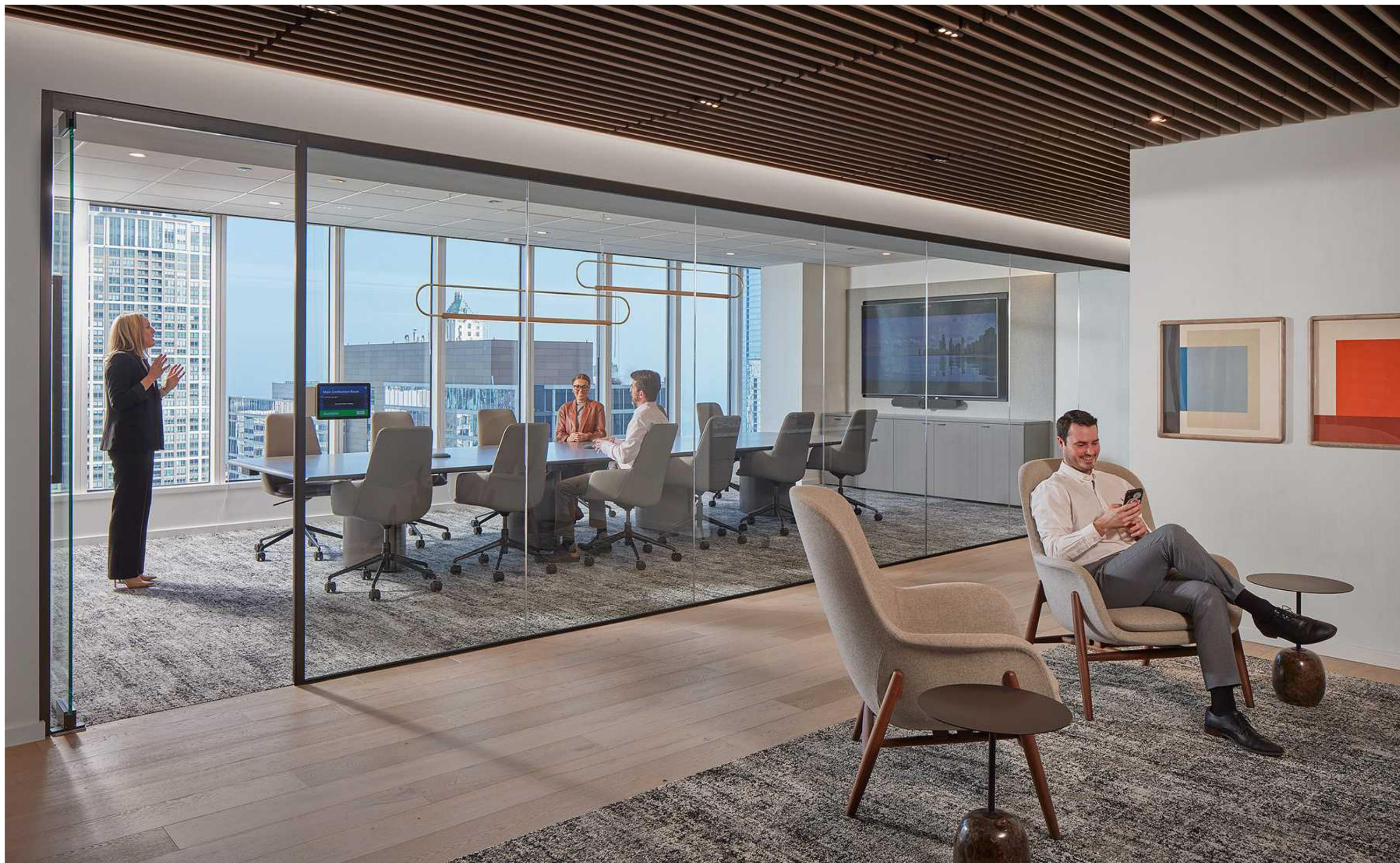
- Glass is sourced locally to reduce cost and carbon footprint, and improve lead time
- Qualifies for LEED points AutoDesk Revit Software with VR (virtual reality) 3D capability

OPTIONAL DIVIDING WALLS

- Dividing wall provides a 42 STC in just 3 1/2" thickness for superior sound control
- Dividing wall can be configured both vertically and horizontally for a variety of aesthetic and functional preferences
- Built-in furniture rails allow for off-modular placement of furniture components for greater flexibility

GENERAL INFORMATION & WARRANTY

- System qualifies for 100% first year tax depreciation under Section 179c for a savings of 36% compared to construction. Consult with a qualified tax professional to verify eligibility
- Lifetime warranty, with exceptions; Refer to ALUR warranty for details



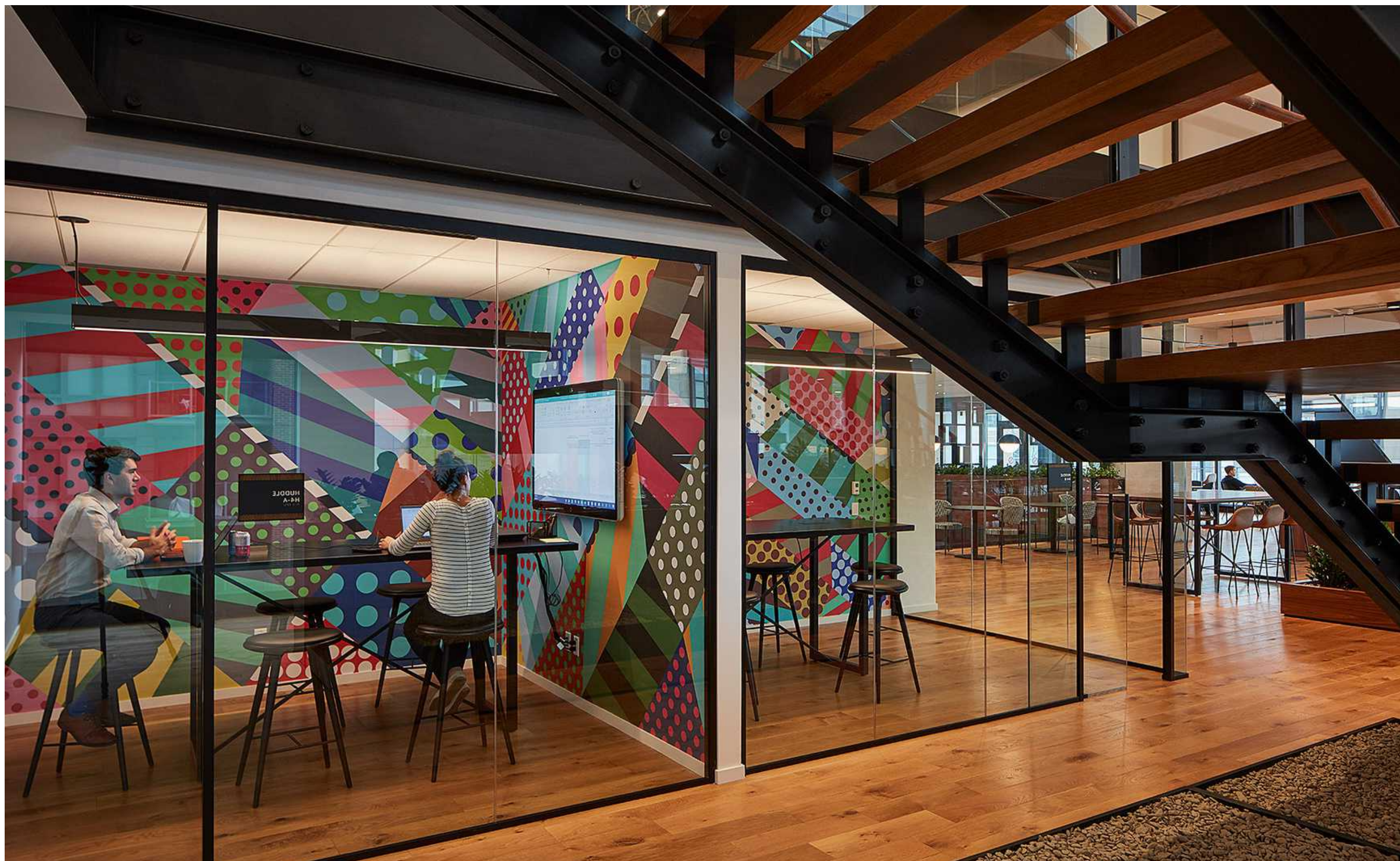




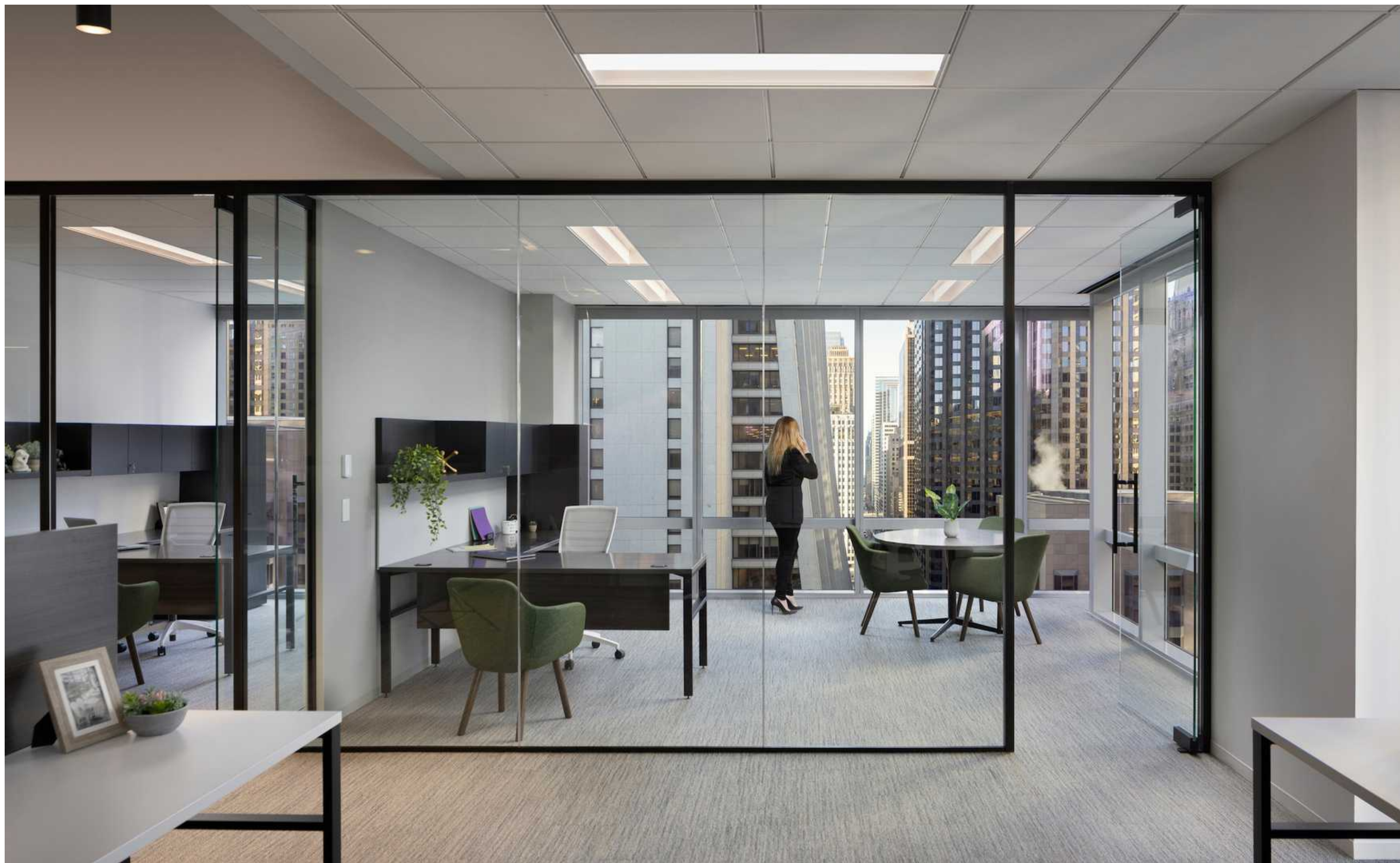














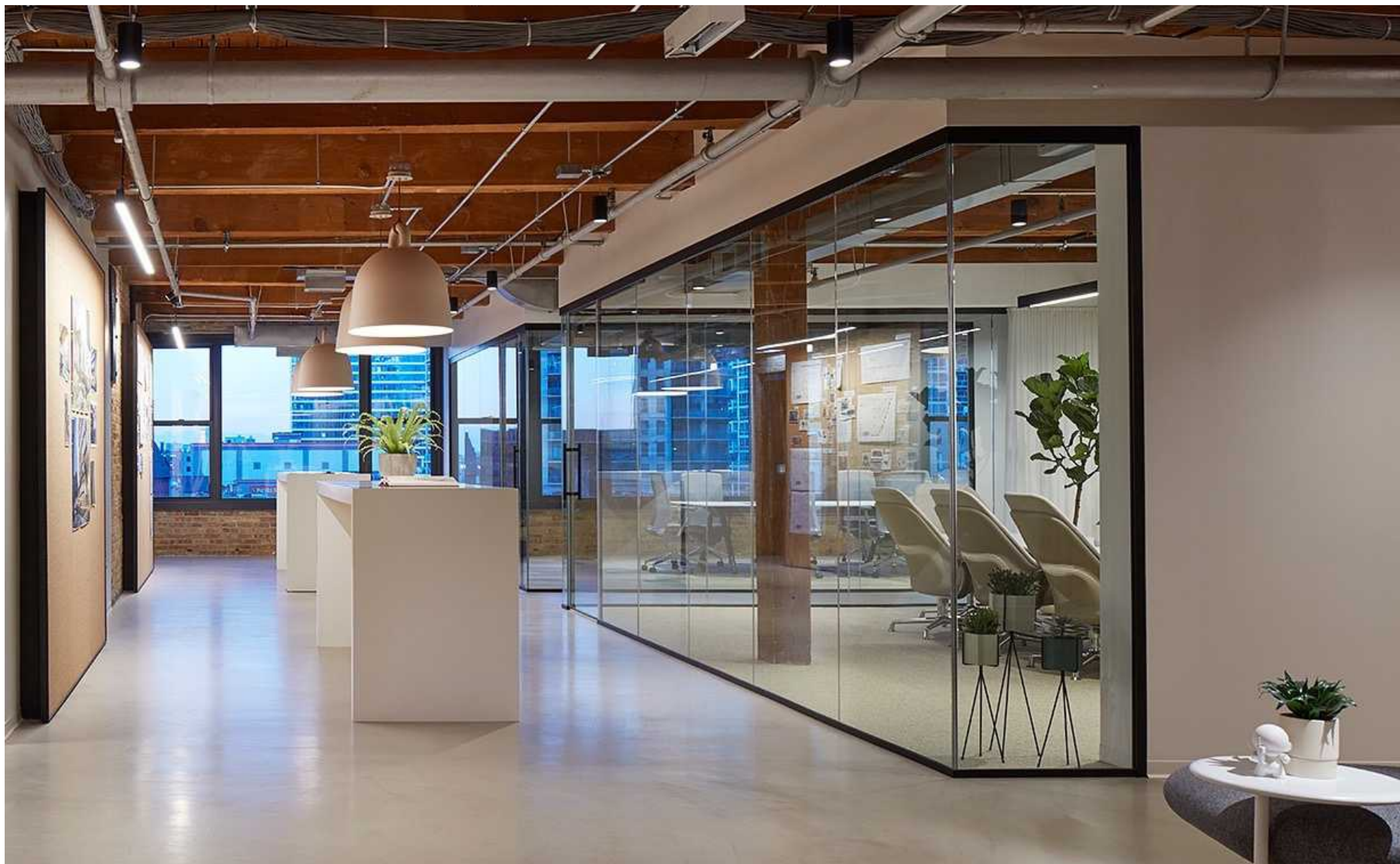


ALLUR



|R|G|







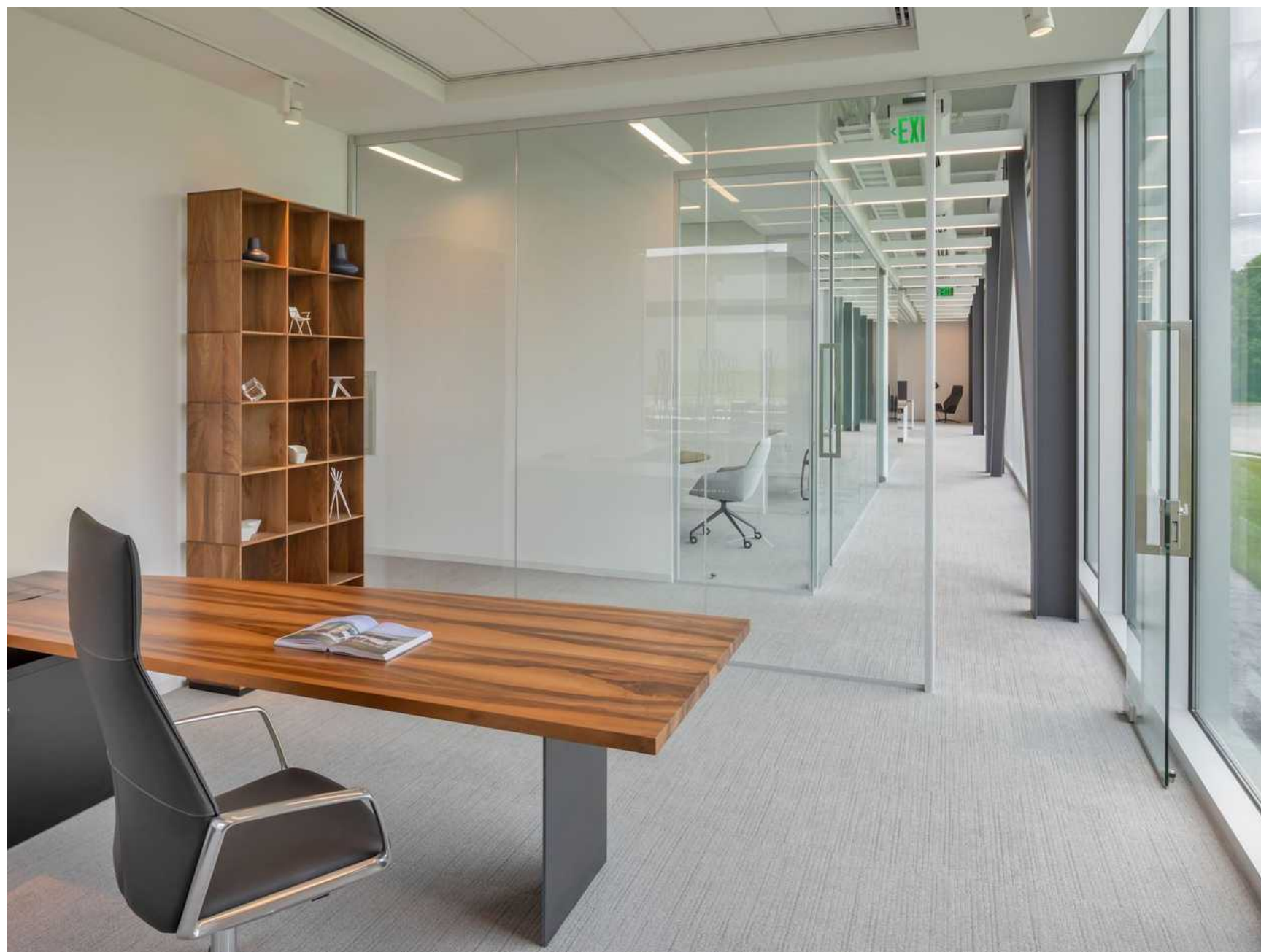
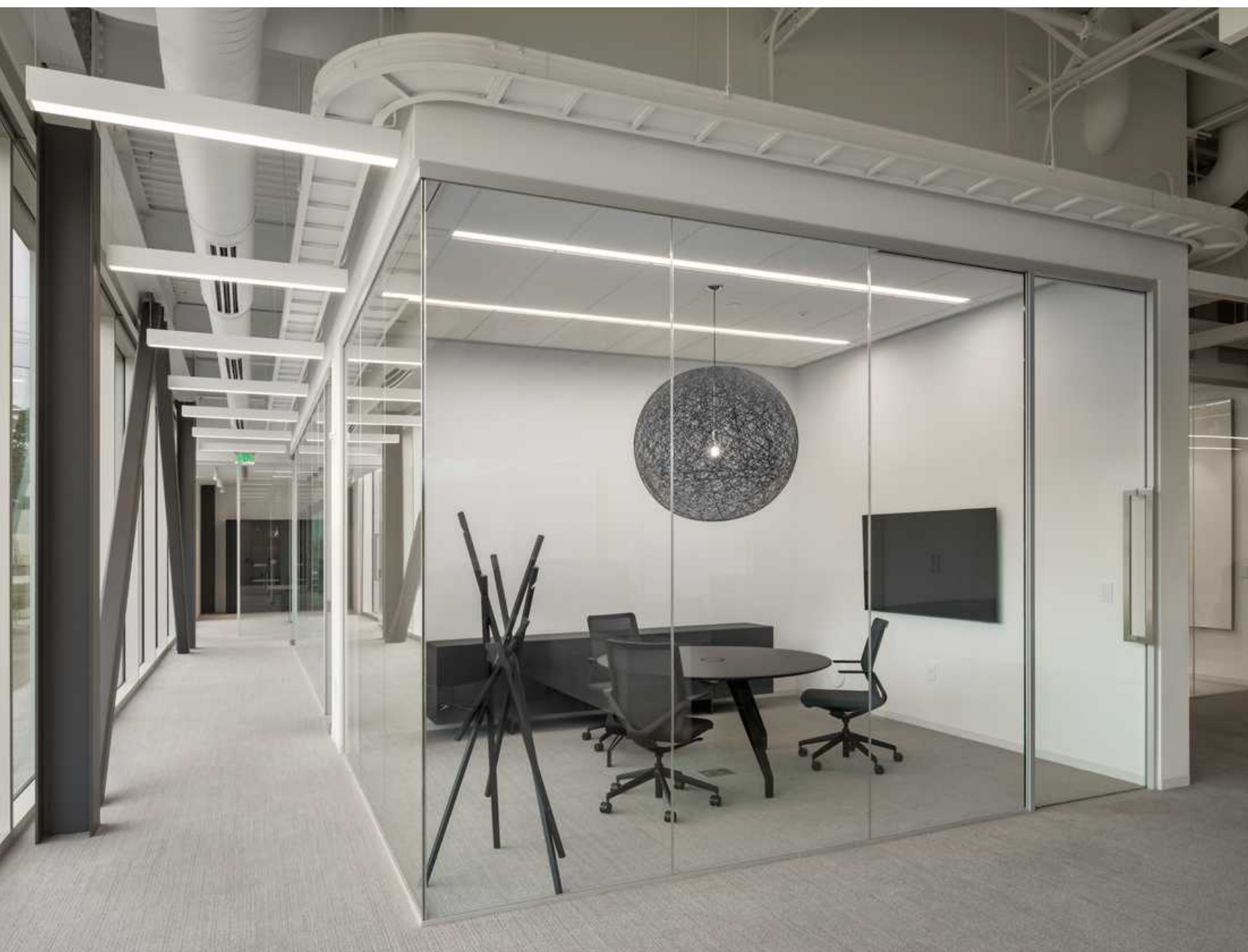
























duo

Double Glazed System

Form and function - perfected.

Our signature minimalist design, now in a double glazed system.

After speaking with building and business owners, designers, architects and contractors alike, we've responded with a product designed—and tested—for your exact needs. While other glass-wall manufacturers provide STC ratings of the glass only, ALUR goes further. Additional testing is performed in the field, on the entire system, providing the most precise measure of the performance you can expect.

29-31
NIC

42-52
STC

DUO Doubled Glazed System

Rating is based on door and glass types.



PRODUCT FEATURES

Golden.

Inspired by the Golden Ratio, Duo by ALUR has already proven to be the best in class as the winner of a NeoCon Gold Award for the Best Movable Wall System.

Built on the proven and highly awarded ALUR single-glazed system, every aspect of Duo encapsulates the Golden Ratio, creating an experience that is equal parts impactful and harmonious.



Simple. Sophisticated.

Meticulously crafted, Duo by ALUR combines refined features with enhanced sound attenuation performance, providing the privacy your space requires and the distinction you deserve.



We design our products to reduce noise distractions.



High Sound Ratings

High NIC and STC ratings provide superior sound control



Sound Blocking

Reduces the transmission of sound from office to office



Frame & Door Seals

Frame compression seals and 4-sided door seals reduce flanking paths

STC RATINGS

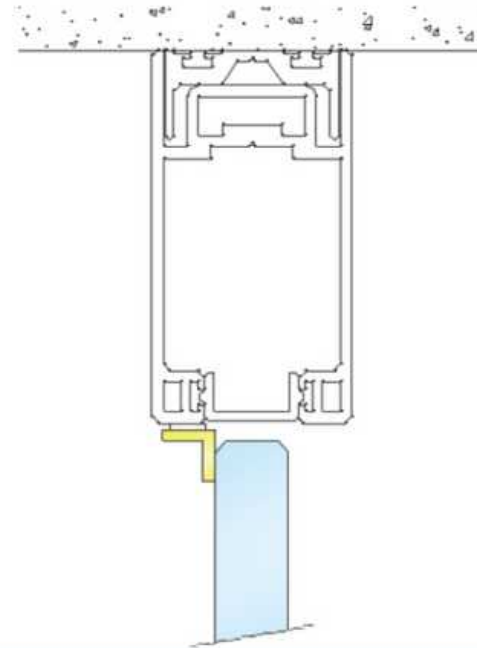
ALUR GLASS WALL	GLASS THICKNESS	AIR SPACE	STC VALUE
MONOLITHIC GLASS	1/2" Monolithic	N/A	36
LAMINATED GLASS	1/2" w/PVB Interlayer	N/A	38
	1/2" w/Sound Control PVB Interlayer	N/A	39
DUO GLASS WALL (SINGLE PANE)			
MONOLITHIC GLASS	3/8" Monolithic	N/A	34
LAMINATED GLASS	3/8" w/PVB Interlayer	N/A	36
	3/8" w/Sound Control PVB Interlayer	N/A	38
DUO GLASS WALL (DOUBLE PANE)			
MONOLITHIC GLASS	3/8" Monolithic + 3/8" Monolithic	2"	42
LAMINATED GLASS	3/8" PVB Interlayer + 3/8" Monolithic Glass	2"	45
	3/8" PVB Interlayer + 3/8" PVB Interlayer	2"	46
	3/8" Sound Control PVB Interlayer + 3/8" Monolithic Glass	2"	48
	3/8" Sound Control PVB Interlayer + 3/8" Sound Control PVB Interlayer	2"	52

NIC RATINGS

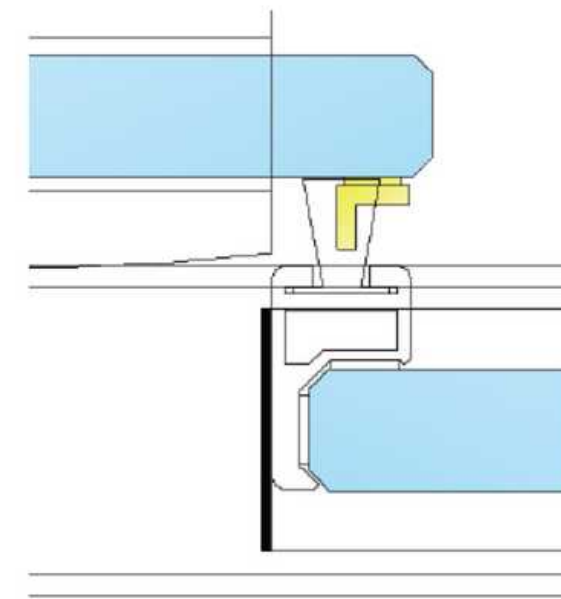
ALUR GLASS WALL	DESCRIPTION	NIC VALUE
MONOLITHIC GLASS	Single Glazed Office Front with Hinged Door/Posts	29
	Single Glazed Office Front with Pivot Door/Postless & Post	27
	Single Glazed Office Front with Sliding Door/Posts	26
	Single Glazed Office Front with Sliding Door/Postless	25
DUO GLASS WALL		
MONOLITHIC GLASS	Double Glazed Office Front with Pivot Door	31
	Double Glazed Office Front with Sliding Door	29

GLASS DOOR SOUND SEAL PACKAGE

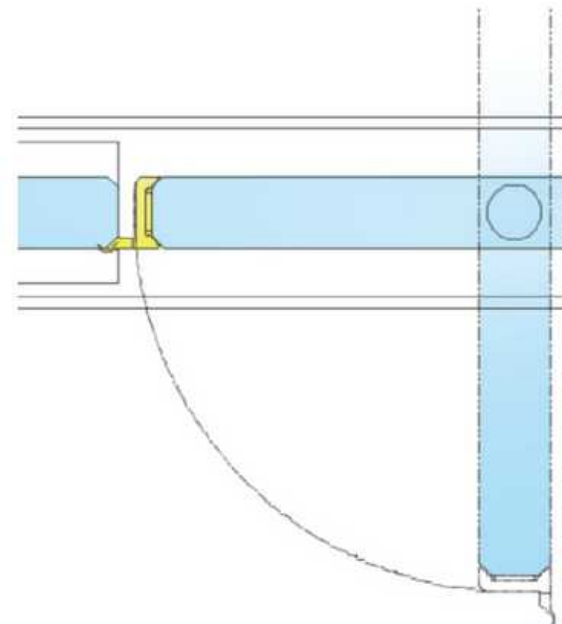
Compression seals are standard in all framing options to eliminate flanking (sound transference) paths. All doors are also fitted with compression seals to minimize sound loss.



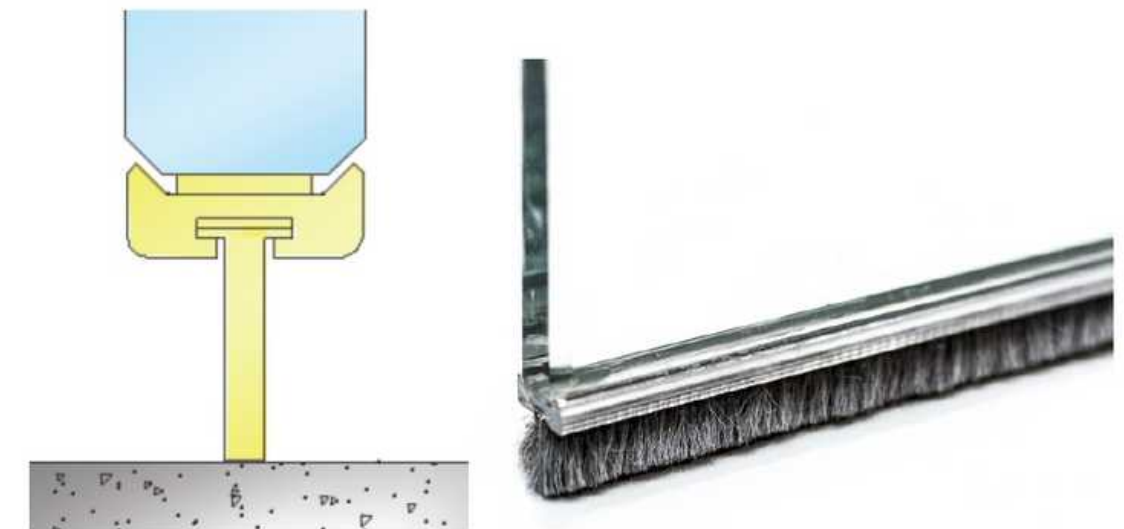
GLBAR40: Top L Bar (for all 1/2" glass doors)



GLBAR120: Side L Bar (for all 1/2" glass sliding doors & pivot doors with post)



GPSDSS: Vertical Side Seal (for all 1/2" postless pivot glass doors)



GBRUSHB-K: Bottom Brush Kit (for all 1/2" glass doors)

CONSTRUCTION SPECIFICATIONS

CEILING:

- CEILING HEIGHT SHOULD NOT VARY MORE THAN $\pm 1/2"$ PER 3 LINEAR FEET OR EQUIVALENT OF A SINGLE GLASS PANEL

SOFFIT:

- TYPICAL SOFFIT WIDTH IS 5"
- GC TO PROVIDE $3/4"$ WOOD BLOCKING OR EQUIVALENT ABOVE DRYWALL CEILING/SOFFIT
- CONSTRUCT VERTICAL STUDS 12" OC ABOVE ALL DOOR LOCATIONS TO CONNECT UNDERSIDE OF SOFFIT TO STRUCTURAL DECK ABOVE
- KICKERS ARE REQUIRED 4 FEET OC FOR FIXED GLASS PANELS AND 16 INCHES OC OVER DOOR OPENINGS

SUSPENDED CEILING:

- ALL ALUR CEILING TRACKS AND TOP FRAMES SHOULD RUN PARALLEL TO THE DROP CEILING GRID WITH A MINIMUM CLEARANCE OF 1-1/2" FROM THE GRIDS EDGE AND SHOULD NEVER SCREW DIRECTLY INTO THE CEILING GRID
- INSTALLERS WILL LAY 24"/30"/48"/60" FACTORY PROVIDED METAL BLOCKS ABOVE THE CEILING TILES TO SCREW INTO
- THE PLENUM SPACE ABOVE ALUR SLIDING DOORS SHOULD BE FREE AND CLEAR OF ANY OBSTRUCTIONS SUCH AS MECHANICAL DUCTWORK AS INSTALLERS NEED TO SECURE SLIDING DOOR TRACKS USING WIRES AND TURNBUCKLES TO THE STRUCTURAL DECK ABOVE FOR EXTRA SUPPORT

WALLS:

- MUST BE VERTICALLY LEVEL TO WITHIN $1/8"$ PER 5 LINEAR FEET
- $3/4"$ WOOD BLOCKING OR EQUIVALENT IS REQUIRED IN ALL DRYWALL INTERACTING WITH ALUR WALLS

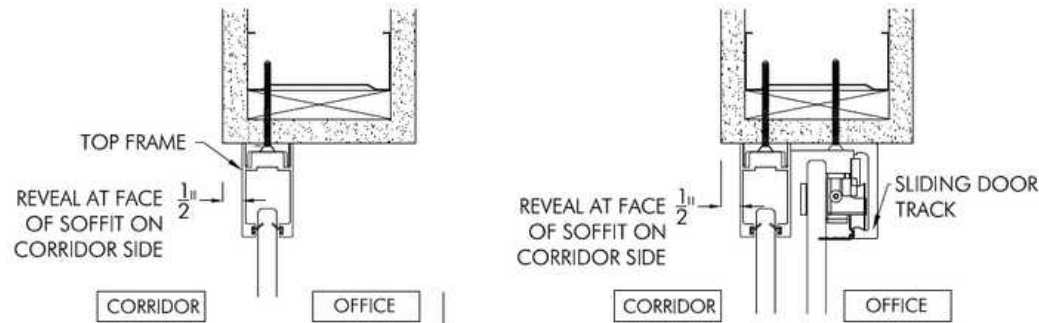
FLOOR:

- MUST BE LEVEL TO WITHIN $\pm 1/2"$ PER 3 LINEAR FEET
- FLOOR WILL REQUIRE FLASHING OR GRINDING IF CEILING HEIGHTS VARY MORE THAN $1/2"$ WITHIN THE SPAN OF A SINGLE GLASS PANEL, GC MUST PROVIDE A LEVEL FLOOR AT ALL DOOR LOCATIONS.
- ALUR BOTTOM FRAMES WILL BE SECURED DIRECTLY TO THE CONCRETE SLAB/RAISED FLOOR WITH ANCHORS
- IF FINISHED FLOORING TYPE IS A HARD MATERIAL (WOOD/STONE), THEN ALUR BOTTOM FRAMES WILL BE SECURED TO THE TOP OF FINISHED FLOORING

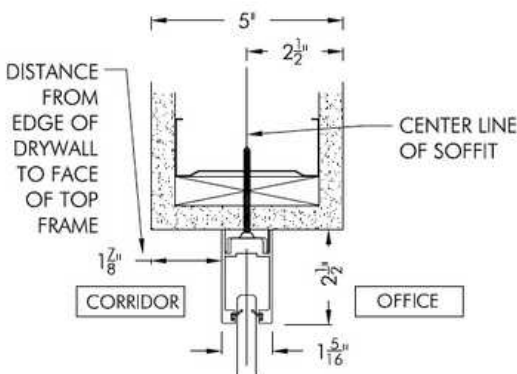
*ADDITIONAL BRACING IS REQUIRED IN SEISMIC MARKETS, CONSULT ALUR FOR DETAILS

INSTALLATION ON SOFFIT

OPTION 1: $1/2"$ REVEAL RECOMMENDED IN LIEU OF FLUSH TO OUTSIDE FACE OF SOFFIT TO FASTEN TO BLOCKING AND TO DE-EMPHASIZE ANY IMPERFECTIONS IN SOFFIT FACE

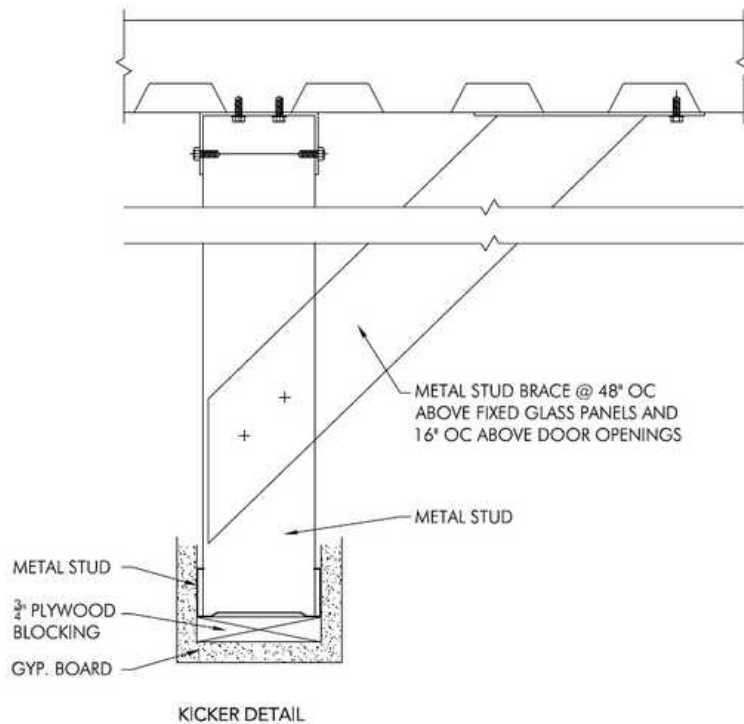
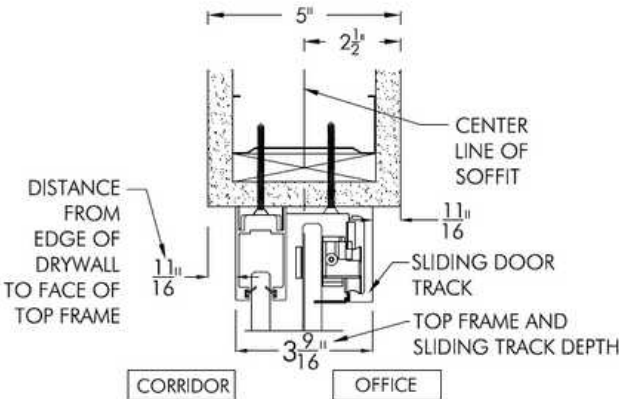


OPTION 2A: FIXED PANEL/PIVOT DOOR CENTERED ON SOFFIT



*IF A PIVOT DOOR OCCURS ON THE SAME RUN AS A SLIDING DOOR, MUST FOLLOW OPTION 2B

OPTION 2B: FIXED PANEL + SLIDING DOOR CENTERED ON SOFFIT




ALUR
10-A BLOOMFIELD AVE. UNIT A-2
PINE BROOK, NJ 07058
T 973 446 2300
NEWPROJECTS@ALURWALLS.COM
WWW.ALURWALLS.COM

THIS DOCUMENT IS THE PROPERTY OF ALUR, AND SHALL NOT BE REPRODUCED WITHOUT WRITTEN CONSENT OF ALUR. THE DRAWINGS ARE TO BE USED FOR EVALUATION PURPOSES ONLY AND SHOULD NOT BE USED FOR BUILDING CONSTRUCTION. ALL DETAILS ARE SUBJECT TO CHANGE WITHOUT NOTICE AT THE DISCRETION OF ALUR.

RECORD #:

PROJECT LOCATION:

PROJECT NAME:

PROJECT MANAGER:

DESIGNER:

DATE:

DRAWING NUMBER:



ALUR duo

|R|G|















Process & Procedures

ALUR DEMOUNTABLE GLASS WALLS

Upon award, your team will be assigned a dedicated Project Manager from ALUR to coordinate the schedule, answer all field question and manage the installation process thru completion.

PRE-PRODUCTION PROCESS

GC to provide:

- Notice to proceed
- CAD plans required to produce shop drawings
- Insurance Requirements
- Building rules and regulations
- Dock access requirements with freight elevator dimensions
- Project schedule with ALUR scope completion dates

PRODUCTION REQUIREMENTS

Production on frames begins once all of the following requirements have been met:

- Signed Contract
- Approved Shop Drawings
- Deposit

INSTALLATION NOTES

- Field measure is NOT required to verify frame sizes. Refer to proposal for framing and hardware lead time.
- Frames are produced from approved shop drawings, are oversized 3" specific to its location on the plan, and cut to size on site. All framing seams, glass joints, etc. will align.
- Any build out larger than the 3" oversize of our frames will require new product at an additional cost.
- Each door/glass panel opening is field measured when drywall is taped and mudded. Glass is cut to size accordingly.
- Shimming can be done inside the bottom frame – system tolerance is 1/2" every 3 feet on average.
- Glass lead time is 2–3 weeks and is congruent with framing lead time.
- Glass is delivered to site directly from local glass supplier.

Thank You

Contact your local rep for samples, spec info and pricing:

CHICAGO

Chrissy Thompson
chrissy@therudergroup.com
773.852.0819

Carrie Hahn
carrie@therudergroup.com
312.608.5349

WISCONSIN

Alyssia Magnuson
alyssia@therudergroup.com
715.271.3069

