

RG | CONTRACT FURNITURE & ARCHITECTURAL PRODUCTS

NEW INTRODUCTIONS

NEOCON 2023

| R | G | RUDER
GROUP



|R|G|



H A L C O N

**Contract
Furniture &
Architectural
Products**



**OUR
BRANDS**



A R K T U R A

stylex

emeco

nienkämper

isomi

unika vaev

Spacestor

therudergroup.com

O/I
NaughtOne

stylex

2023 INTRODUCTIONS



LUNA – designed for seamless integration with Still screens.

LUNA

Available September 2023

Luna is banquette seating specified by the inch, allowing for symmetry and fit in even the most unusually sized spaces. Segments range from 25" to 60"; they can be running or stand alone, ends open or finished with a half-moon-shaped arm. High or low back, also includes a planter and trio of accessory tables. Luna is available with a black laminate plinth base or cast aluminum legs. Accessories include a tray table, tablet arm, and wireless charging tray.



LUNA



stylex

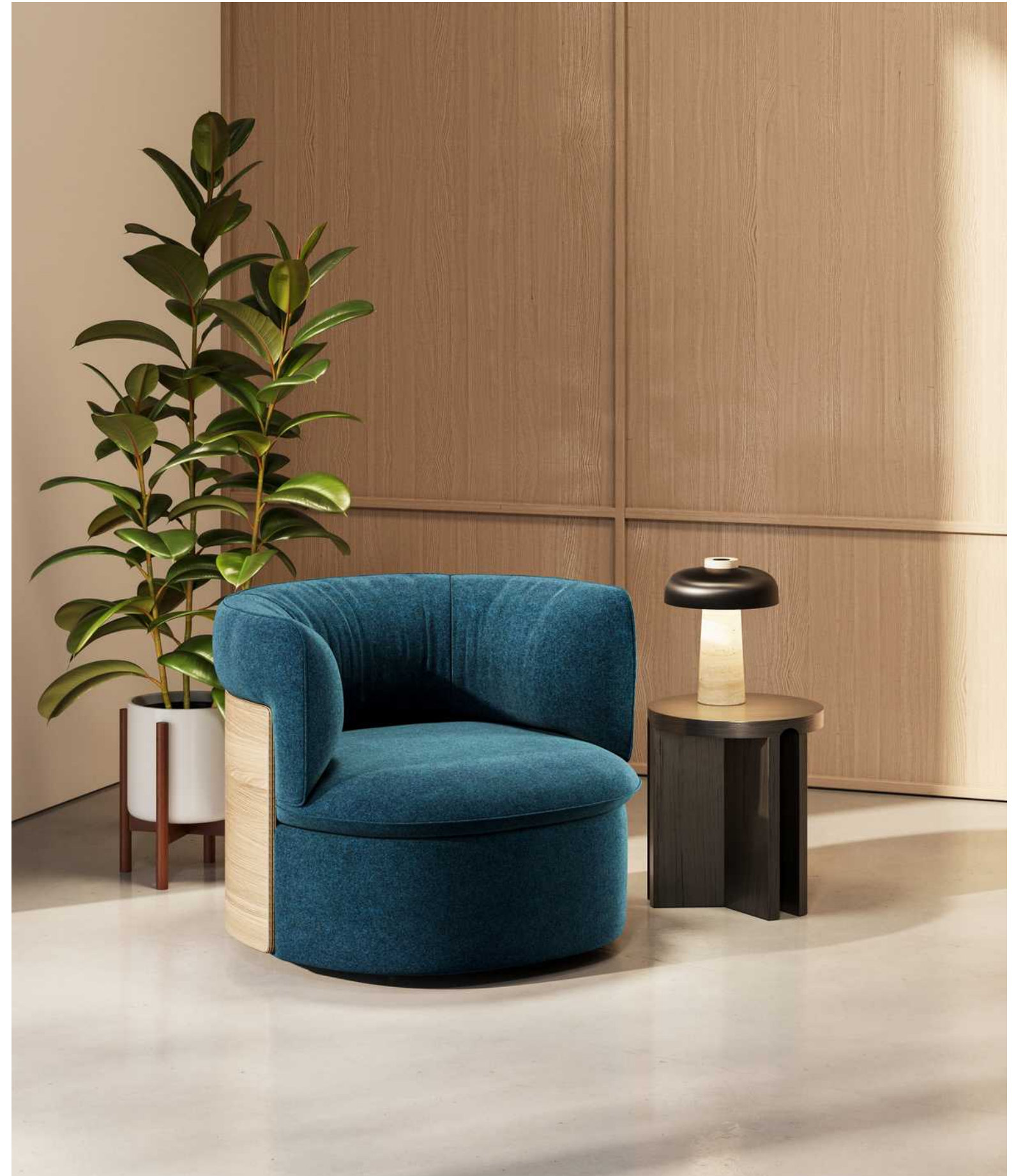
|R|G|

OKO

Available September 2023

Oko is an elegant lounge chair inspired by the curves of a cocoon. The pillowy seat and backrest invite you to sink in, while a rigid back panel supports the shape and doubles as a decorative element. Sophisticated material combinations, including fabric, leather, and wood (for the back panel), enhance the design's versatility.

Oko was designed with sustainability in mind. The seat and back cushions are engineered to be easily removed and reupholstered, making it easy to keep the chair looking its best for years to come.







EASE UP

Experience the perfect combination of sustainability, comfort, and affordability with Ease Up. Crafted from a single piece of high-density polypropylene, this chair boasts a seamless design with no visible connection points between its supple back, seat pan, and c-shaped legs. Adding a touch of texture and contrast, an upholstered seat pad enhances both the aesthetics and comfort of the chair. It can be ganged and stores compactly, stacking up to twelve chairs high and is available with a dolly for convenient transport.





COVE

Cove lounge chairs are comfortable, visually striking, and functional pieces of furniture that are perfect for personal meetings, focused work, or simply relaxing. They are available in a low-back and high-back version, and have been updated to offer a new 4-leg wood base for both the chair and ottoman.

UMO

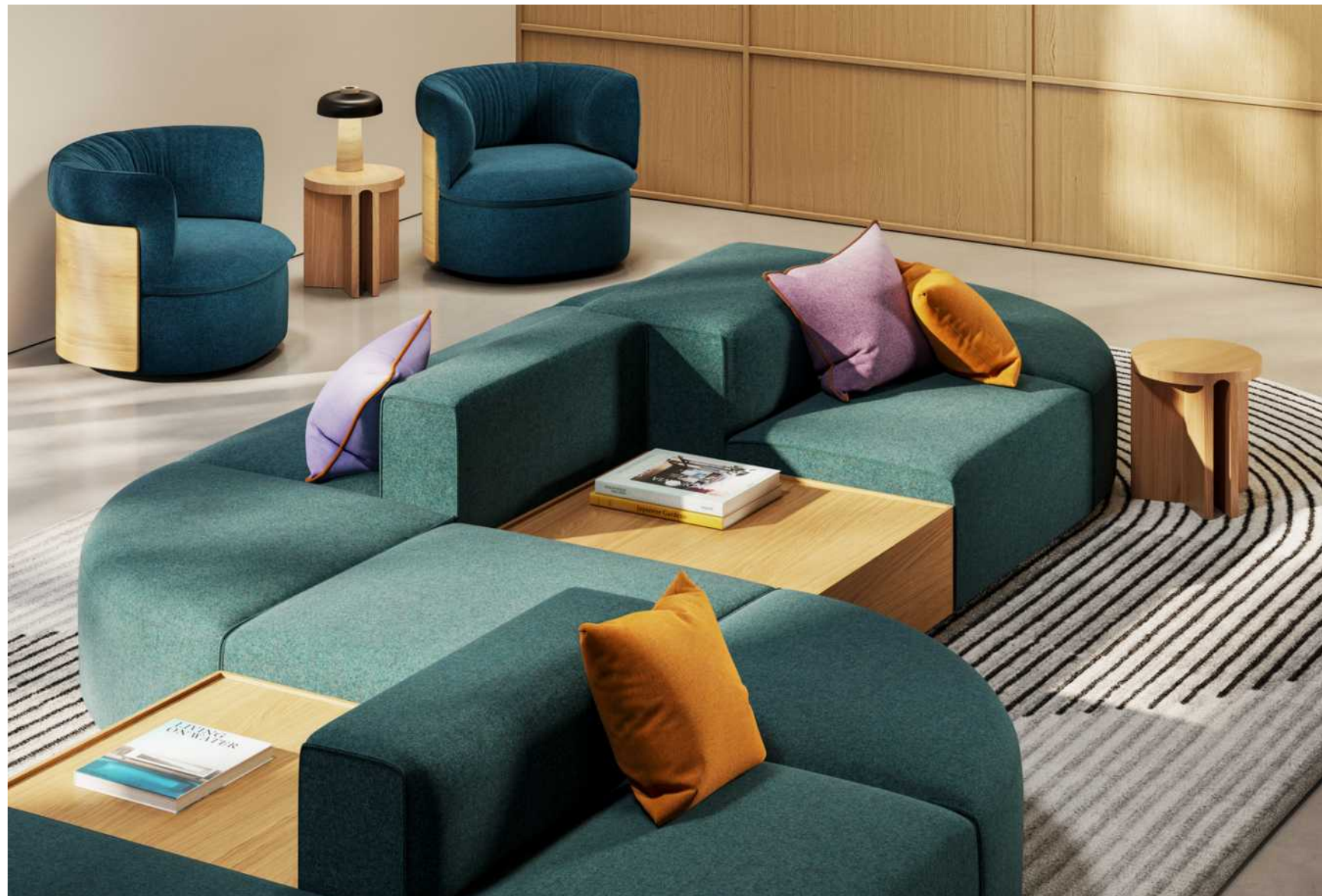
Umo is a collection of solid wood tables that combine geometry and form to create sculptural objects that add utility and visual warmth to any space. The collection has been expanded to include a coffee table, which complements the existing side tables in oak, maple, walnut, and opaque black.

YOOM

Available October 2023

The Yoom lounge collection is defined by its soft, simple forms and unrestricted configurability. Carefully considered proportions and upholstery construction ensure that Yoom offers a highly comfortable sit. The pieces' interplay of materials and shapes adds texture and visual sophistication to contract settings.

The Yoom line extension includes half- and quarter-round seating components, two sizes of integrated tables, and a new arm width. These additions are available on both Yoom and Yoom Soft. Feet can be fitted with plastic glides or casters, and power can be integrated into the base for a place to plug in.



YOOM



stylex

|R|G|



2023 INTRODUCTIONS





MAX

Max is the ultimate lounge chair. Generous in size, style, and comfort. Fully upholstered in fabric or leather and boasting a soft landing with No-Sag springs and molded foam padding, the frame can withstand the rigorous demands of high-traffic interiors. The innovative and intricate stitching process retains the chair's convex seat, making Max quite unique.





PLYBORD

Sit on, around, or near it; the table series doubles as a seating solution. Easy to move around, the sizes and shapes included in the collection allow the pieces to mix, match, and pair together. The seamless, geometric form is possible due to its impeccable craftsmanship. Plybord is constructed out of plywood. The pigmented oil finish, available in an array of beautiful shades, highlights the Plybord's distinctive wood grain.





RUT [root]

the mod modular system

The square modular sofa system, designed by furniture designers Thomas Bernstrand and Stefan Borselius, delivers the feeling of home to the contract world of design.

Supported by a sturdy steel H-beam that securely slots into substantial blocks of solid wood, the square modules lock securely into the steel beam in any desired direction.

The modules build a linear system, left or right L-shaped sofas, and can arrange double-wide or back-to-back. Modules can rearrange, be substituted, or the system can grow to accommodate the needs of the interior over time. Overly generous in size, each module uses No-Sag springs and polyurethane foam padding. RUT offers solid ash, oak, or pine table modules, two different styles of armrests, and solid wood side tables to create a customized system.





JACK

Jack is a sturdy and sculptural table series with a presence. Offering an exciting combination of materials and finishes, Jack's geometric design has a solid wood or aluminum table top paired with a coned steel or wood base.

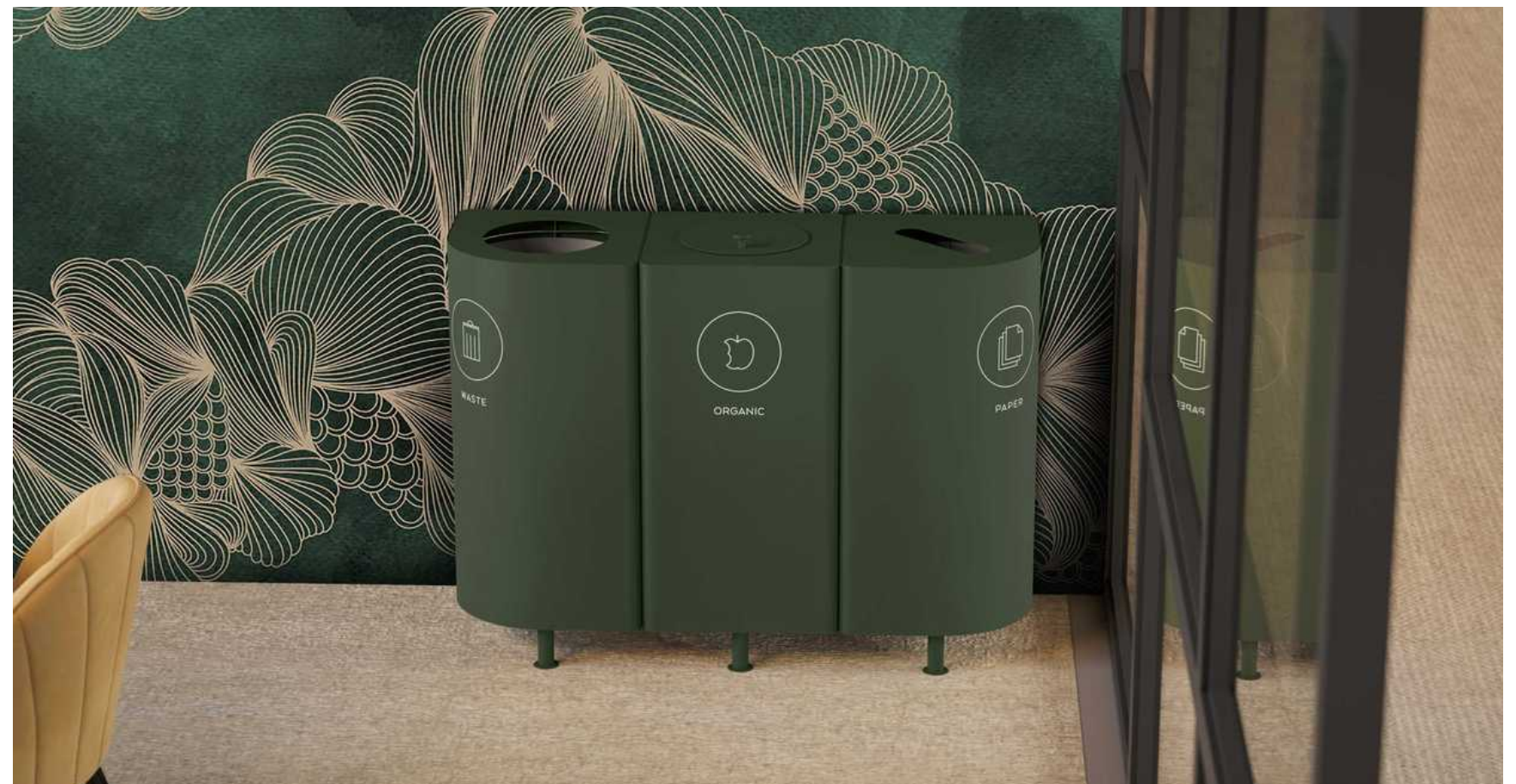


KLOSS [klos]

modular waste management

The Kloss waste management system provides the ability to separate, organize, and recycle in style. Kloss has a simple rounded steel frame that can stand solo or in groups. The square, quarter round, or half round frames have varying-shaped openings, and include the option to add a symbol on the front for a wide range of versatility.

The steel frame comes in various popular colors and comprises 20% recycled material. Kloss frame options include optional legs or lockable castors. All Units can incorporate fixed lids, locks, and moisture-protection containers.



CENTRAL

The hybrid chair sits at dining height and feels like a lounge. The chair's beautiful frame has rectangular legs in solid ash, oak, or steel, all available in various finishes. Uniquely upholstered, the subtle stitching details on the seat and back are beyond beautiful.



LOLA

Comfortable, fun, and reliable. Lola's strong personality is the exclamation mark that will add character to any room. It's a chair that's easy to sit on, but how you sit on it is up to you. The steel frame is available in various loud colors or subtle neutrals.

NOMAD

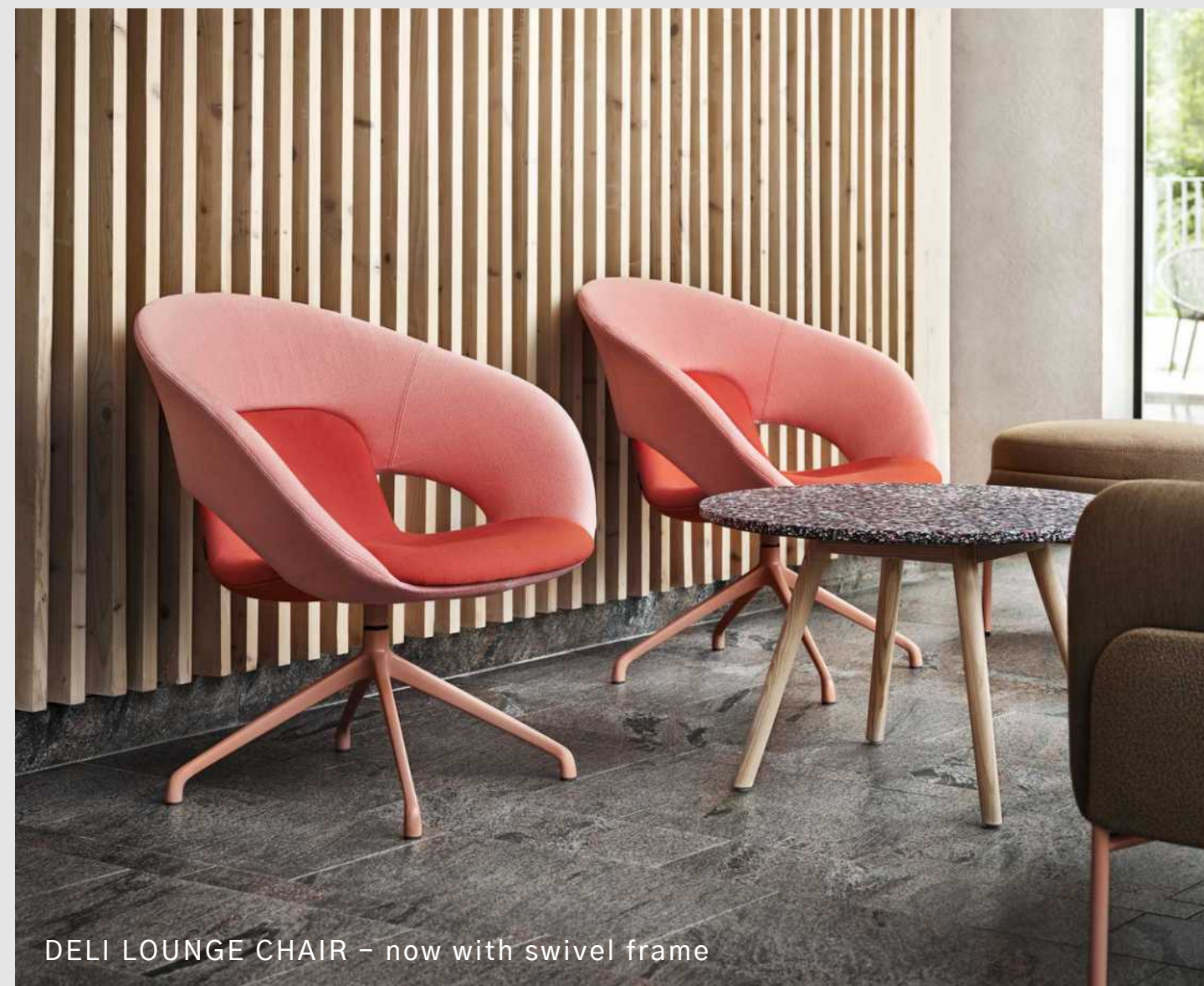
The occasional table series offered in various sizes, heights, and materials to pair and play with one another. Lightweight and easy to move, the occasional table lends the flexibility to rearrange according to the needs of its surroundings. Available in solid ash, solid oak, or various trendsetting steel colors.





TINNEFF [tin-eff]

Tinnef creates a second life for plastic waste. The black, white, or multicolored top is 100% manufactured from recycled plastics. Entirely fashioned from plastic cosmetic bottles, yogurt containers and medical packaging, the tabletop creates an exceptional advancement in environmental innovation. The new café table has a sleek chrome or steel base in various colors.



DELI LOUNGE CHAIR – now with swivel frame

HALCON

2023 INTRODUCTIONS

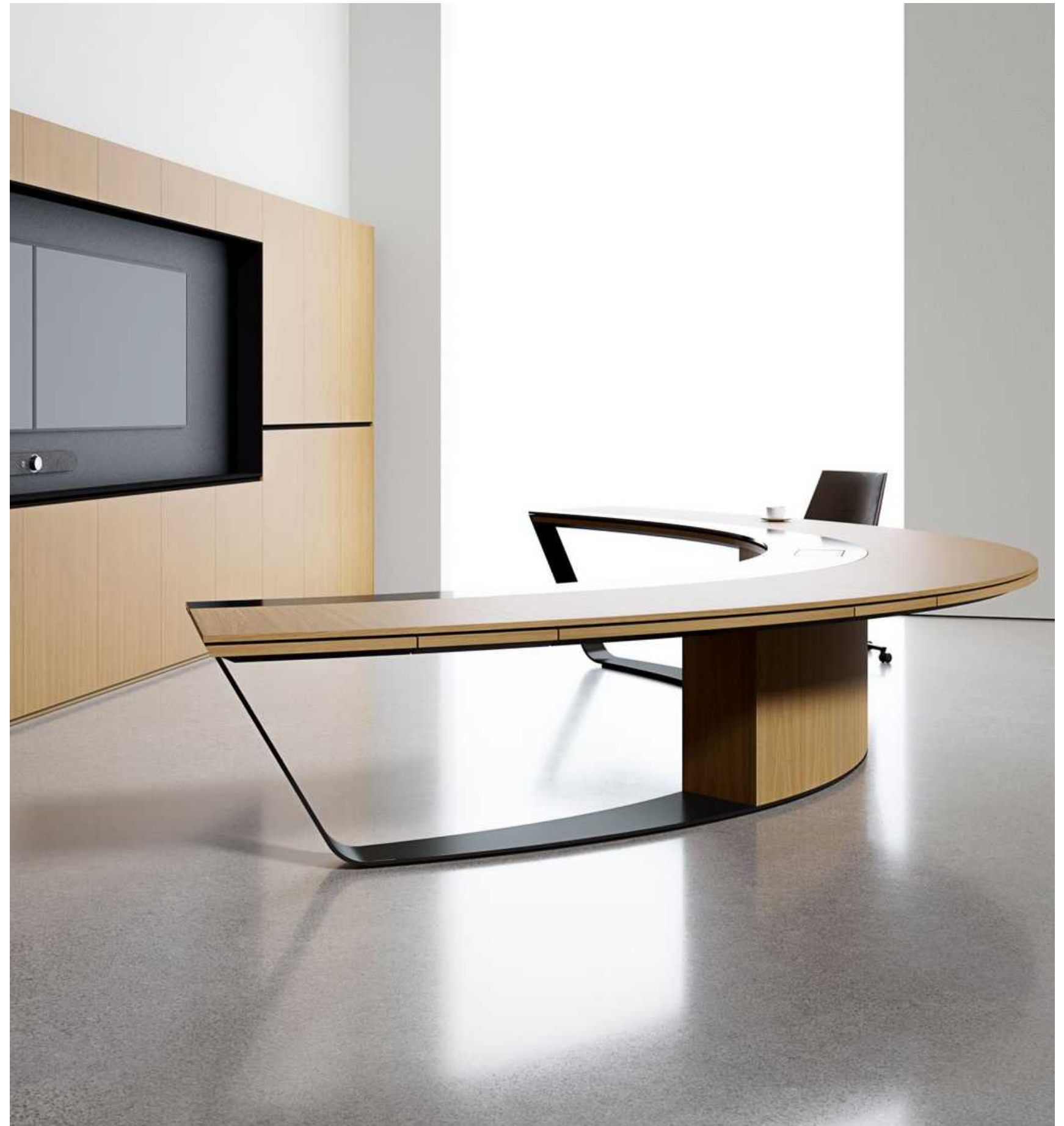
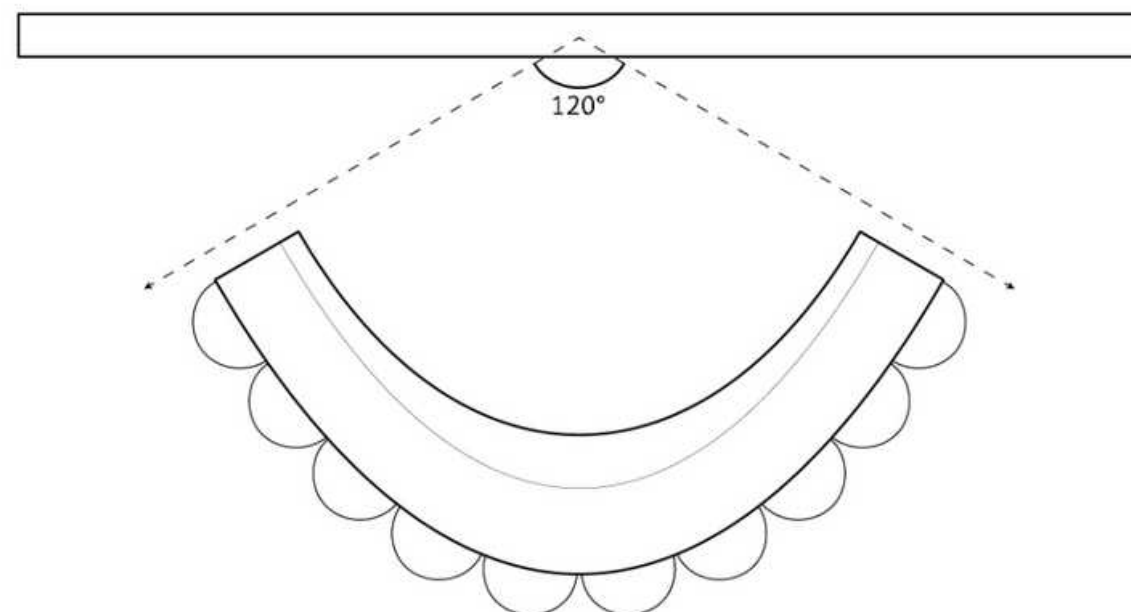
HALCON

HALCON

OPTIC

An expansive collection of tables and storage designed to harmonize beautiful aesthetics with technical excellence and orchestrate an unparalleled hybrid meeting experience.

Distinctive and graceful table shapes facilitate immersive meetings, promoting eye-to-eye contact to foster more meaningful interactions between in-person and remote participants. Connectivity has been seamlessly integrated to support the effortless use of leading-edge technologies. Crafted with meticulous attention to detail, our storage solutions offer opportunities to enhance room acoustics and can be tailored to accommodate every need.





OPTIC

Curved table shapes enhance sightlines, allowing in-person and remote participants to enjoy a more equitable hybrid meeting experience.

Fully integrated controls offer rich, intuitive features for every room.



OPTIC





OPTIC



H A L C O N

|R|G|



2023 INTRODUCTIONS





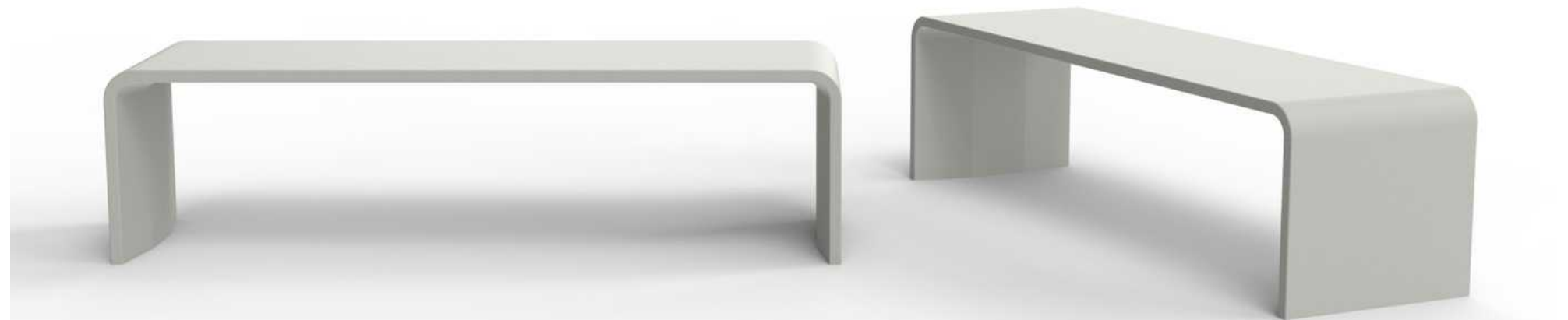
BODEN

Outdoor cast concrete bench [glass reinforced concrete].



16 1/2"H x 61 1/2"W x 17 3/4"D
185 lbs

optional mounting plates & skate stops



white or grey polished concrete
• minimum order of 5 for custom color

VALUTA Planters

Adding a new element to the Valuta product family, Valuta Planters offer a simple modular solution to incorporate biophilia into any space. Designed and developed around the Valuta waste receptacle platform, Valuta Planters seamlessly coordinate by sharing common dimensions, allowing for a variety of layout configurations.



KASTA

KASTA takes recycling seriously. Receptacles are designed to be used independently or ganged to create just the right disposal streams for virtually any locale and anticipated load. A faceted, architectural form and carefully curated finish palette make integration into commercial interiors easy and elegant. Made in the USA.

22, 30, 35 or 45 gallon / 6 Matte Body Colors & 9 Matte Top Colors



TROSA

TROSA waste receptacles embody a sleek and seamless design, with clean lines that flow from the front-opening body to the lid for a streamlined aesthetic. Function follows form with features such as an elevated angled lid opening, integrated door pull, soft-closing hinges, and liner guides for ease of accessibility and maintenance. Made in the USA.

42 gallon / 5 Body Colors & 7 Top Colors



KASTA Waste Receptacles



ALUR

2023 INTRODUCTIONS



CURVED CORNERS | Available on ALUR Single Glazed in radius 14"-36"



Tour Our Chicago Showroom
[Take a 3D tour](#)

FRAMED DOORS | Available on ALUR Single Glazed Hinge or Sliding Doors



nienkämper

2023 INTRODUCTIONS





BEAM Lounge

Introducing Beam, a new and innovative seating collection that is compact and curvaceous, Beam has a playful and amusing silhouette. Just as the name suggests, Beam's fully upholstered rounded seating elements rest on an exposed wood beam through the center which adds warmth to the design by providing a rich play of materials and finishes. Available as a single lounge chair or two and three-seater, with the option of adding table elements.



GATEWAY EDGE

The award-winning Gateway™ Collection is expanding. The latest addition, Gateway™ Edge, tables feature unique soft-faceted edge bases in polished aluminum and multiple powder coat colors. It has a shape that is both evocative and contemporary. Gateway™ Edge is carefully proportioned with simple design and clean lines.



GATEWAY EDGE | Conference Table, Training Table & Wall Mounted Table



TOKO



nienkämper

|R|G|

TOKO Meeting Pod

Explore TOKO, designed by Carl Gustav Magnusson. Toko is a collection of self-supporting structures designed to create unique acoustical spatial environments within open spaces. With a seemingly endless variety of configurations, Toko allows you to configure distinct acoustical environments for a variety of uses based on the needs and activities of the modern workplace. Whether it's a place to collaborate or concentrate—to meet or to eat, Toko allows for the creation of beautiful and functional workspaces

Toko's freestanding design enables relocation or reconfiguration as well as independence from traditional building architecture, without incurring the costs associated with conventional drywall construction. It's customizable, perfect for the ever evolving workplaces.

4 Wood Species Available for Frame & Perforated Insert Panels

Optional Insert Panels: Acoustic, Veneer, Plastic Laminate



VOX

SIGNATURE WORKSTATION

Vox®Signature Height Adjustable Executive Workstation is eminently efficient: its simplicity and flexibility make it the perfect choice for a wide range of workplace applications. With Sit-stand capabilities, Vox Signature is designed with the physical and functional requirements of today's varied work styles in mind. Vox®Signature Executive Workstation can be customized to meet many needs, with a range of sizes, storage options and finishes that allow for personalization and flexibility.

Mitered edge detail, concealed hardware, and soft close cabinets and drawers create a clean, sophisticated look. The minimal shelving with integrated lighting and acoustic wall panel creates workspace solutions for a broad range of work styles and spaces. Floating shelves create space for display directly mounted to an architectural wall.



VOX Signature Workstation

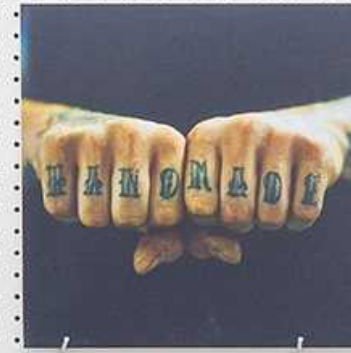


emeco

2023 INTRODUCTIONS

It wasn't about style.

We started in 1944 with a government commission for a particular kind of chair. A chair to withstand the US Navy. Life on a ship is tough. Salt water. Salt air. The occasional atomic blast. In 77 steps, we turn ordinary scrap aluminum into extraordinarily strong. Crafted by hand in Hanover, PA, our chairs are built so strong that we guarantee them for life.



BROOM

by Philippe Starck

Broom is reclaimed, recyclable – and designed to last. Made in the USA from 90% waste polypropylene and reclaimed wood fiber that would normally be swept into the trash. That's why we call it Broom.

All colors suitable for outdoor use. Stacks 6 high.

For Quick Ship, a maximum order quantity of 30 pieces applies.

4 NEW COLORS – Terracotta Orange, Sage Green, Butter Yellow, Light Grey





BIRDS

by Yun Li

The Birds are made from sheet aluminum in an economic but precise process that expresses the formal quality of the birds with a minimum of elements.

Available in 3 sizes: Small – Sparrow, Medium – Blackbird & Large – Pigeon.



COAT OF MANY COLORS

Powder coat colors for our aluminum collections.

Discover Emeco's in-house selection of powder coat colors, applicable for a wide selection of aluminum chairs, stools and tables – 1 Inch, 1 Inch All Aluminum, 1951, 2 Inch Flat Base tables, 2 Inch X Base tables, Emeco Stools and Utility.

Outdoor approved. No minimum order quantity.

Same price & lead time as standard black powder coat finish.



111 NAVY

Wasteful turned into hopeful. 111 Navy® Chair is the first ever chair made from recycled bottles. Each chair is made from at around 170 plastic bottles. Made in the USA and built to stand up to tough use.

All colors suitable for outdoor use.

For Quick Ship, a maximum order quantity of 30 pieces applies.

Verified carbon footprint. Bifma certified & CAL133 compliant.

4 NEW COLORS – Cypress Green, Light Blue, Bordeaux, Dark Blue



UTILITY

by Jasper Morrison

Utility by Jasper Morrison is a collection of true longevity that combines purposeful, utilitarian design with solid materials and craftsmanship. The handcrafted frame in recycled aluminum is offered with Emeco's signature hand brushed finish, or black powder coated – both approved for outdoor use. The solid wood seat and back come in Ash, Oak, Walnut and Accoya. Accoya is outdoor approved. Made in the USA.

Emeco's in-house powder coat colors are available for Utility chair and stool frames.



UTILITY



emeco

|R|G|

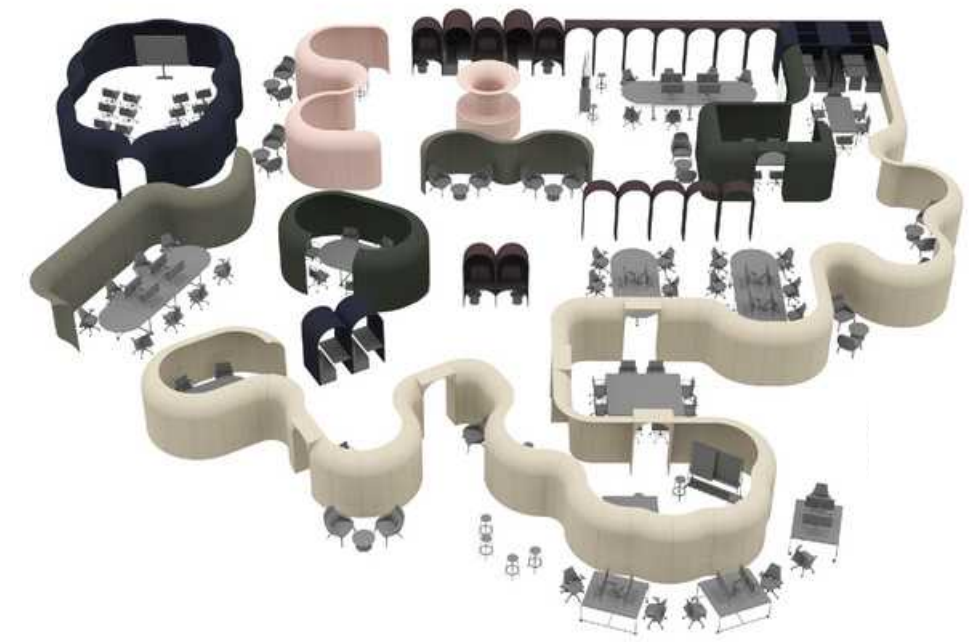
Spacestor[®]

2023 INTRODUCTIONS

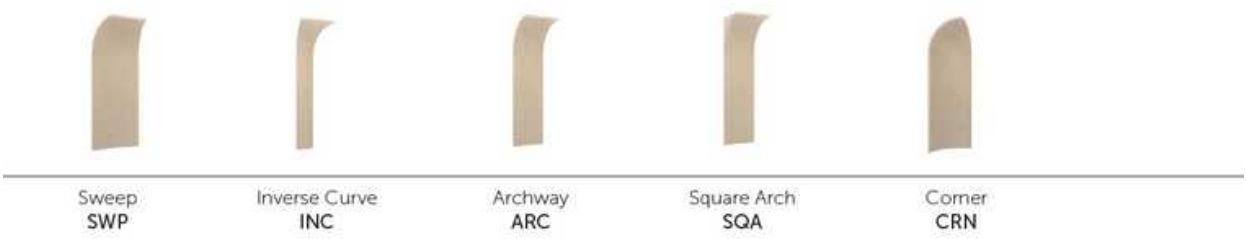
ARCADIA

Arcadia creates the new landscape for work taking inspiration from timeless architectural forms.

In a world where change is the only constant, the future workspace needs settings that are stimulating, refreshing and highly adaptable. Introducing Arcadia, a new concept for today's workspaces. The fluid forms of endless possible configurations take inspiration from classical architecture and are made possible through just five pieces.



Kit of Parts



Arcadian Forms



Finishes

Upholstery finishes



Arcadia’s organic shapes and soft forms have been specifically crafted to be globally familiar, yet not highly directive, allowing instant creation and landscaping of spaces with classic Colonnades, Portals, Pantheons, Forums, Rotundas and Cloisters – without building walls. The modular kit of parts construction, pure geometric shapes and patented quick release joining system means shapes can be reused and reconfigured over and over again to experiment, evolve or just have fun as we adapt to our ever changing present.

All forms are available in a palette of 6 colors, carefully chosen from an earthy palette referencing minerals and biophilia to compliment and blend together shades from the natural world.



ARCADIA



Divider Configuration



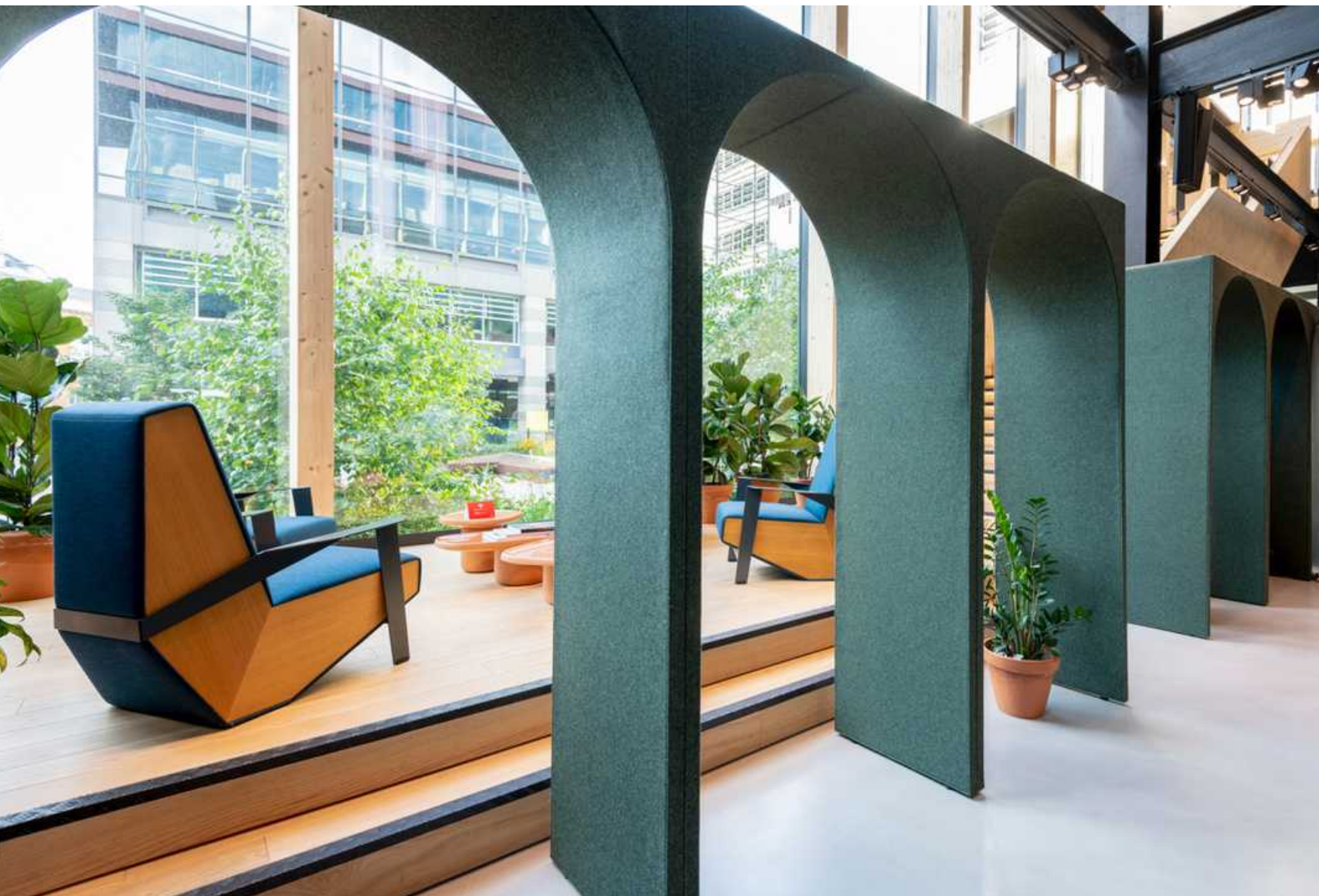
Enclosure Configuration



Meeting Spaces Configuration



Booth Configuration



PORTALS

A flexible family of individual working spaces.

A flexible family of productive spaces catering to employee choice through a variety of individual working styles. Stay connected to the buzz but away from mainstream distractions.

Now available with glass doors. Focus working spaces with reduced speech intelligibility.



Modular

Plug & Play Modularity



Inclusive

DDA/ ADA accessible variations available



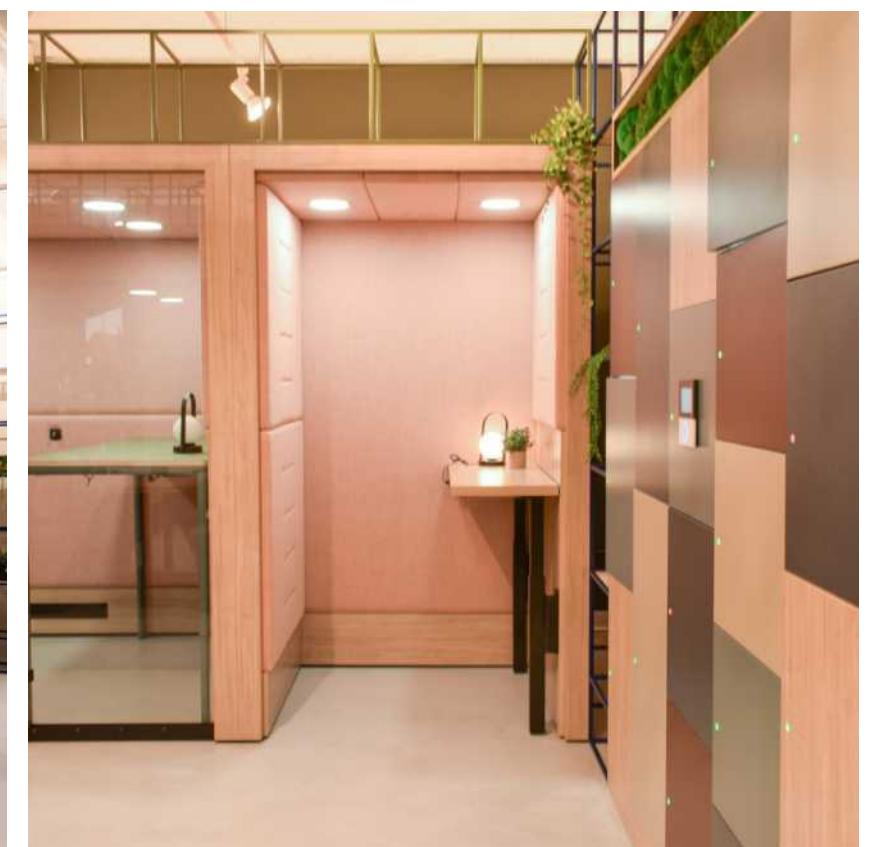
Power

Integrated Power & USB Charging



Lighting

Integrated Lighting & Table



PALISADES

Light, minimalist space division with endless possibilities.

The highly-flexible Palisades range allows teams to build unique scrum spaces, soft seating areas or neighborhoods combining shelving, zone dividing and storage to create unique divisions. Palisades II offers a new way of dividing zones in a light and minimalist way. An elegant expression of an architecture within an architecture, allowing for a simple, attractive division of space without building walls.

Palisades II is a hugely flexible system and can be fully customized to your design, growing to any size, making new architectures around or even over your desk; your imagination is the limit!

New accessories including Light Glass inserts and decorative curved plywood components.



PALISADES II



O/I NaughtOne

2023 INTRODUCTIONS





MORSE Table System

Changing work patterns have highlighted how flexible the humble table can be, quickly changing modes between working, meeting, conferencing, schooling, coffee drinking and dining, all within the space of a day. All these fast changes are achieved by simply scooping up or sliding along piles of books, plates, laptop...

The Morse Table System transitions from dining table to solo work table or team work bench with ease, so that the same space can serve multiple purposes in the one day. It's grown-up enough to be right at home in premium airport lounges, as a place to touch down with a laptop between flights, and yet it's equally comfortable in design studios, as a surface for collaboration and creativity. Morse also fits right in in universities, as a table for research and learning.



MORSE offers seemingly infinite possibilities when it comes to tabletop colour and series of unique accessories that resemble dots and dashes, giving this versatile table its name.



PIPPIN

Comfort meets agility. Flexible, movable furniture often feels temporary, missing the comfort factor – not so with Pippin. This single-seat, cone-shaped lounge chair offers a refreshing sense of presence that encourages people to come together for inspiring conversations, rather than rushing off to the next thing.

Compact yet solid and stable, Pippin provides upholstered comfort and cupped support that invites longer interactions. At the same time, it readily moves as and where it needs to: it's set on wheels and it comes with a convenient strap handle that facilitates movement while adding a playful touch.

Clean-lined Pippin comes with a tailored, zip-on, zip-off cover that gives the chair its sophisticated personality. Pippin comes in NaughtOne's wide selection of fabrics and finishes, and it's also available with or without the handle and castors. While this lounge chair is built for longevity, it also considers the circular economy. Its inner casing is free from glues, and is easy to disassemble at the end of its life.







THANKS!

Contact your local rep for samples, spec info & pricing:

CHICAGO

Chrissy Thompson

chrissy@therudergroup.com

773.852.0819

Katey Spicer

katey@therudergroup.com

312.296.0359

Brad Scelfo

brad@therudergroup.com

630.430.2410

Carrie Hahn

carrie@therudergroup.com

312.608.5349

WISCONSIN

Alyssia Magnuson

alyssia@therudergroup.com

715.271.3069

